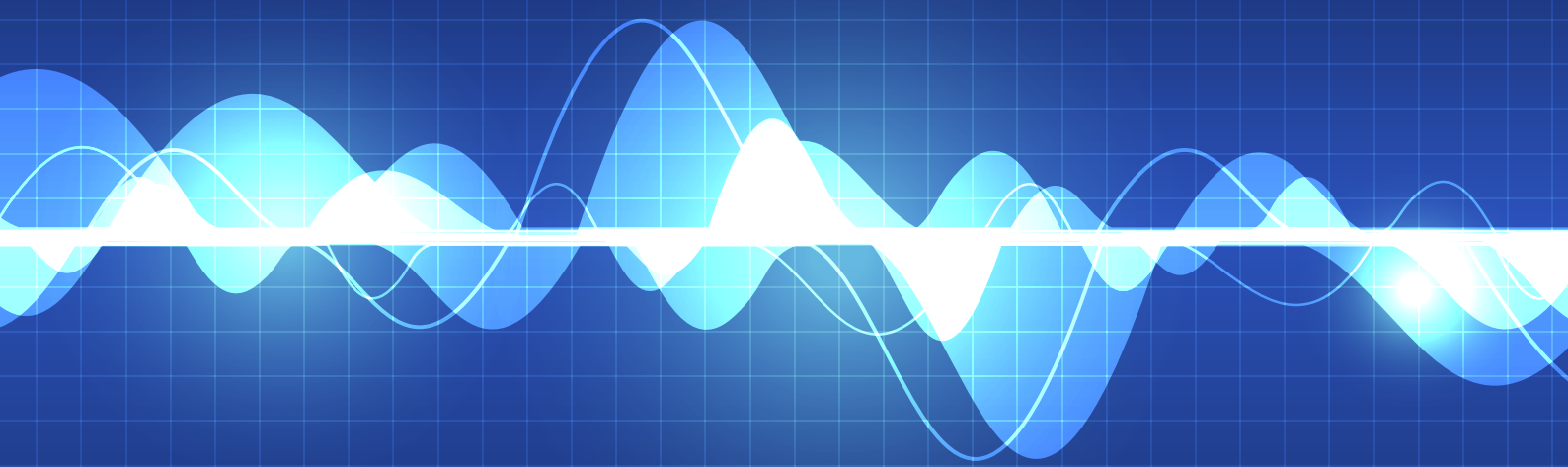


Mannering Colliery

Monthly attended noise monitoring
October 2020

Prepared for Great Southern Energy Pty Ltd (trading as Delta Coal)
November 2020





Servicing projects throughout Australia and internationally

SYDNEY

Ground Floor, 20 Chandos Street
St Leonards NSW 2065
T 02 9493 9500

NEWCASTLE

Level 3, 175 Scott Street
Newcastle NSW 2300
T 02 4907 4800

BRISBANE

Level 1, 87 Wickham Terrace
Spring Hill QLD 4000
T 07 3648 1200

ADELAIDE

Level 1, 70 Pirie Street
Adelaide SA 5000
T 08 8232 2253

MELBOURNE

Ground Floor, 188 Normanby Road
Southbank VIC 3006
T 03 9993 1905

PERTH

Level 6, 191 St Georges Terrace
Perth WA 6000

CANBERRA

PO Box 9148
Deakin ACT 2600

Manning Colliery

Monthly attended noise monitoring

Prepared for Great Southern Energy Pty Ltd (trading as Delta Coal)
November 2020

EMM Newcastle
Level 3, 175 Scott Street
Newcastle NSW 2300

T 02 4907 4800
E info@emmconsulting.com.au

www.emmconsulting.com.au

Mannering Colliery

Monthly attended noise monitoring

Report Number

H200049 RP10

Client

Great Southern Energy Pty Ltd (trading as Delta Coal)

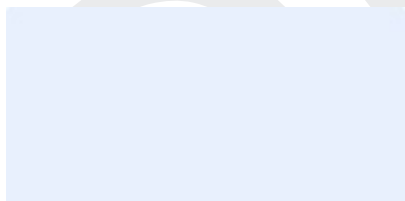
Date

6 November 2020

Version

v1 Draft

Prepared by



Teanuanua Villierme

Senior Acoustic Consultant

6 November 2020

Approved by

Katie Teyhan

Associate

6 November 2020

This report has been prepared in accordance with the brief provided by the client and has relied upon the information collected at the time and under the conditions specified in the report. All findings, conclusions or recommendations contained in the report are based on the aforementioned circumstances. The report is for the use of the client and no responsibility will be taken for its use by other parties. The client may, at its discretion, use the report to inform regulators and the public.

© Reproduction of this report for educational or other non-commercial purposes is authorised without prior written permission from EMM provided the source is fully acknowledged. Reproduction of this report for resale or other commercial purposes is prohibited without EMM's prior written permission.

Table of Contents

1	Introduction	1
2	Noise criteria	2
2.1	Operational noise criteria	2
2.2	Low frequency noise criteria	2
3	Assessment methodology	4
3.1	Attended noise monitoring	4
3.2	Instrumentation	4
3.3	Determination of stability category	6
4	Review of data and discussion	7
5	Conclusion	9
	References	10

Appendices

Appendix A	Glossary of acoustic terms	A.1
Appendix B	Project approval extract	B.1
Appendix C	EPL extract	C.1
Appendix D	Calibration certificates	D.1

Tables

Table 2.1	Noise impact assessment criteria	2
Table 2.2	One-third octave low frequency noise threshold levels	3
Table 3.1	Attended noise monitoring locations	4
Table 3.2	Stability categories and temperature lapse rates	6
Table 4.1	Mannering Colliery attended noise monitoring results – October 2020	8
Table A.1	Glossary of acoustic terms	A.2
Table A.2	Perceived change in noise	A.2

Figures

Figure 3.1	Site boundary and noise monitoring locations	5
Figure A.1	Common noise levels	A.3

DRAFT

1 Introduction

EMM Consulting Pty Limited (EMM) was engaged to complete operator-attended noise surveys on behalf of Great Southern Energy Pty Ltd (Delta Coal).

The purpose of the monitoring was to address requirements of the approved Mannering Colliery Noise Management Plan (NMP), prepared to satisfy the requirements of the project approval MP06_0311 (PA) and Environment Protection License (EPL) 191. It is of note that Modification 5 (Mod 5) of the site PA was approved by the NSW Department of Planning, Industry and Environment (DPIE) in June 2020, and Delta Coal is currently in the process of updating the NMP to reflect any changes to, or additional, operational noise conditions.

Noise monitoring is required to occur on a monthly basis. This report presents the results and findings of attended noise monitoring conducted on 22 October 2020.

The following material was referenced as part of this assessment:

- Department of Planning, Industry and Environment (DPIE), PA MP06_0311, as modified on 5 June 2020 (current as of the monitoring date 22 October 2020);
- Environment Protection Authority (EPA), EPL 191, as varied on 25 November 2019 (current as of the monitoring date 22 October 2020);
- Mannering Colliery NMP, approved by DPIE in December 2019;
- NSW EPA, Industrial Noise Policy (INP), 2000; and
- NSW EPA, Noise Policy for Industry (NPfI), 2017.

A glossary of acoustic terms relevant to this report is provided in Appendix A.

2 Noise criteria

2.1 Operational noise criteria

Manning Colliery noise criteria are provided in Table 1, Condition 2 of Schedule 3 of the PA. The EPL references the PA with respect to noise limits. Extracts of the relevant sections of the PA and EPL pertaining to noise are provided in Appendix B and Appendix C, respectively.

Delta Coal is currently in the process of updating the NMP to reflect any changes to or additional operational noise conditions from Mod 5 and hence the attended noise monitoring program has been undertaken in accordance with the approved NMP. The NMP was prepared in line with the Modification 4 project approval and in accordance with the INP. Notwithstanding, the noise assessment locations in the PA have not changed following the Mod 5 approval and hence the three attended noise monitoring locations adopted in the NMP for the purpose of determining compliance remain representative of the noise assessment locations outlined in the PA. The operational noise criteria in the PA are generally more stringent than those in the Modification 4 project approval and the NMP. For this reason, site noise contributions measured during this round of monitoring have also been compared to the PA criteria for completeness.

The Manning Colliery attended noise monitoring program is undertaken on a monthly basis during the evening and night periods.

The attended noise monitoring locations and relevant criteria as per the NMP are summarised in Table 2.1.

Table 2.1 Noise impact assessment criteria

Monitoring location	Assessment locations	Day	Evening	Night	Night
		$L_{Aeq,15 \text{ minute}}$, dB	$L_{Aeq,15 \text{ minute}}$, dB	$L_{Aeq,15 \text{ minute}}$, dB	$L_{A1,1 \text{ minute}}$, dB
RA1	4, 5, 6	40	40	40	49
RA2	7, 8	45	45	43	47
RA3	9, 11, 18, 20	39	39	39	49

The NMP specifies the following meteorological conditions under which noise criteria do not apply:

- wind speeds greater than 3 m/s at 10 m above ground level;
- stability category F temperature inversion conditions with wind speeds greater than 2 m/s at 10 m above ground level; or
- stability category G temperature inversion conditions.

For this assessment, the recorded L_{Amax} has been used as a conservative estimate of the $L_{A1,1 \text{ minute}}$. The EPA accepts sleep disturbance analysis based on either the $L_{A1,1 \text{ minute}}$ or L_{Amax} metrics, with the L_{Amax} resulting in a more conservative assessment of site noise emissions.

2.2 Low frequency noise criteria

Fact sheet C of the NPfI provides guidelines for applying modifying factor corrections to account for low frequency noise emissions. The NPfI specifies that a difference of 15 dB or more between site 'C-weighted' and site 'A-

weighted' noise emission levels identifies the potential for an unbalanced noise spectrum and potential increased annoyance at a residential receiver.

Where a difference of 15 dB or more between site 'C-weighted' and site 'A-weighted' noise emission levels is identified, the one-third octave noise levels recorded should be compared to the low frequency noise threshold values in Table C2 of the NPfI, which has been reproduced in Table 2.2.

Table 2.2 One-third octave low frequency noise threshold levels

One-third octave $L_{Zeq,15\text{ minute}}$ threshold levels													
Frequency (Hz)	10	12.5	16	20	25	31.5	40	50	63	80	100	125	160
dB (Z)	92	89	86	77	69	61	54	50	50	48	48	46	44

The following modifying factor corrections for low frequency noise are to be applied to the site $L_{Aeq,15\text{ minute}}$ noise contribution where the site 'C-weighted' minus site 'A-weighted' noise emission level is found to be 15 dB or more and:

- where any of the one-third octave noise levels in Table 2.2 are exceeded by up to and including 5 dB and cannot be mitigated, a 2 dB positive adjustment to measured/predicted A-weighted levels applies for the evening/night period; or
- where any of the one-third octave noise levels in Table 2.2 are exceeded by more than 5 dB and cannot be mitigated, a 2 dB positive adjustment to measured/predicted A-weighted levels applies for the day period and a 5 dB positive adjustment to measured/predicted A-weighted levels applies for the evening/night period.

Hence, where possible throughout each survey, the operator has estimated the difference between site 'C-weighted' and site 'A-weighted' noise emission levels by matching audible sounds with the response of the sound analyser ($L_{Ceq}-L_{Aeq}$). Where this was found to be 15 dB or greater, the measured one-third octave frequencies have been compared to the threshold values in Table 2.2 to identify the relevant modifying factor correction (if applicable). This method for the application of modifying factors for low frequency noise has been applied to this assessment as presented in Section 4.

It is of note that the NPfI states that low frequency noise corrections only apply under the standard or noise-enhancing (ie applicable) meteorological conditions.

3 Assessment methodology

3.1 Attended noise monitoring

To quantify noise emissions from Mannering Colliery, 15-minute operator-attended noise monitoring surveys were completed at representative locations as per the approved NMP.

Attended noise monitoring locations and their coordinates are listed in Table 3.1 and are shown in Figure 3.1.

Table 3.1 Attended noise monitoring locations

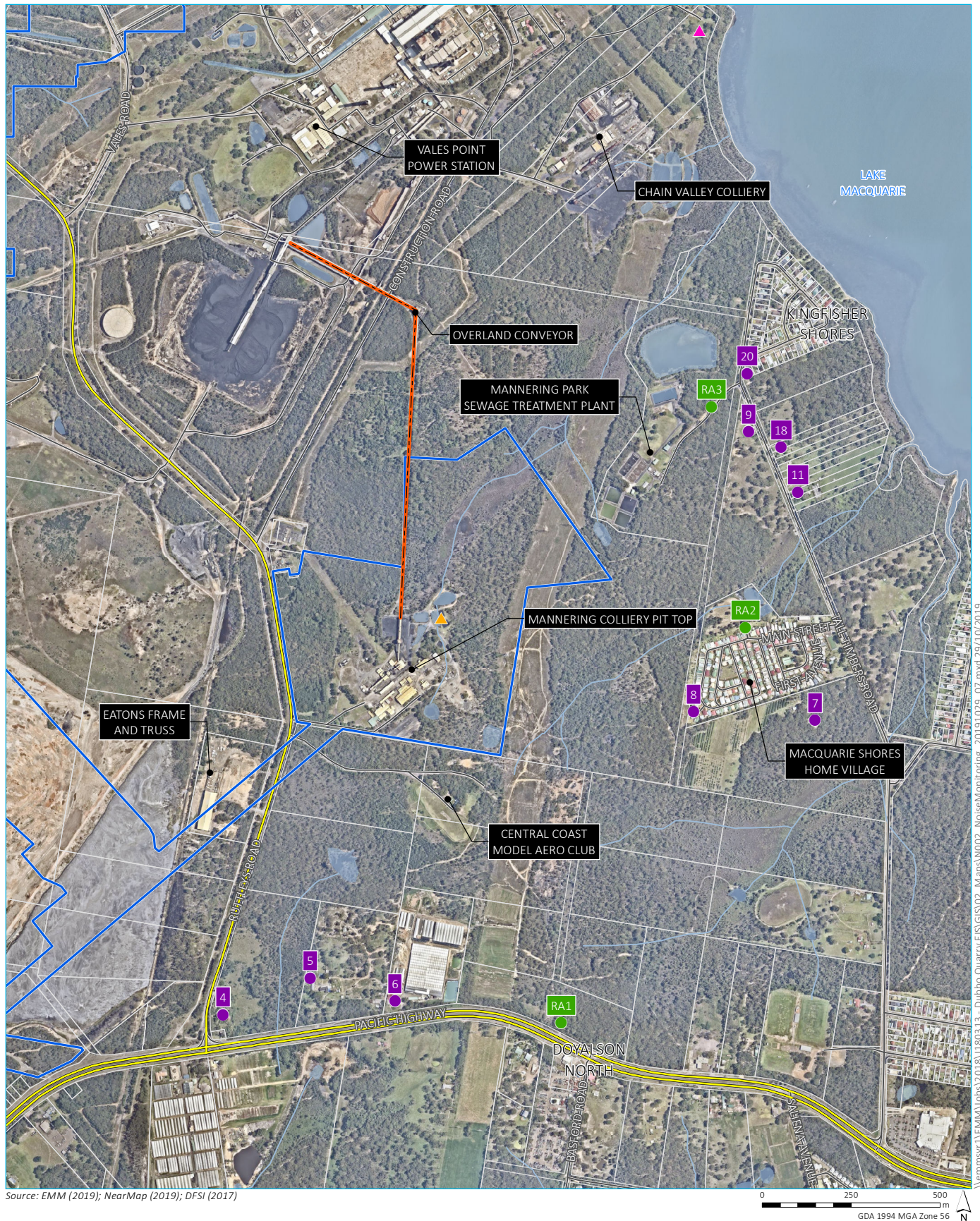
Attended noise monitoring location	Description	Coordinates (MGA56)	
		Easting	Northing
RA1	Pacific Highway, Doyalson	364646	6327221
RA2	Macquarie Shores Village, Doyalson North	365164	6328332
RA3	Tall Timbers Road (northern end), Kingfisher Shores	365069	6328953

As per the NMP, attended noise monitoring is scheduled considering the occurrence of regular operations at Mannering Colliery. Noise monitoring avoids scheduled down-time or maintenance. Regular operations (ie coal production) were occurring during this round of noise monitoring.

3.2 Instrumentation

A Brüel & Kjær (B&K) 2250 Type 1 sound analyser (s/n 2759405) was used to conduct 15-minute attended measurements and record one-third octave frequency and statistical noise indices. The sound analyser was calibrated before and on completion of the survey using a B&K Type 4230 calibrator (s/n 1276091). Instrumentation calibration certificates are provided in Appendix D.

Where possible throughout each survey, the operator has quantified the contribution of site noise and other significant noise sources. This was done by matching audible sounds with the response of the sound analyser (where applicable) and/or via post-analysis of data (eg low-pass filtering).



KEY

- ▮ Mannering Colliery project approval boundary
- ▮ Alignment of overland conveyor to VPPS
- ▮ Main road
- ▮ Local road
- ▮ Watercourse/drainage line
- ▮ Waterbody
- ▮ Cadastral boundary

- Assessment location
- Attended monitoring location
- ▲ Continuous monitoring location
- ▲ Meteorological station

Site Boundary and noise monitoring locations

Mannering Colliery noise monitoring

Figure 3.1

3.3 Determination of stability category

For the purpose of this assessment and as required by the NMP, stability categories were determined for each 15-minute attended monitoring period. The stability category data for the monitoring period was obtained from Mannering Colliery's meteorological station located to the north of the site (refer to Figure 3.1).

The stability categories and associated ranges in temperature lapse rates are presented in Table 3.2.

Table 3.2 Stability categories and temperature lapse rates

Stability category	Temperature lapse rate (ΔT) ($^{\circ}\text{C}/100\text{ m}$)
A	$\Delta T < -1.9$
B	$-1.9 \leq \Delta T < -1.7$
C	$-1.7 \leq \Delta T < -1.5$
D	$-1.5 \leq \Delta T < -0.5$
E	$-0.5 \leq \Delta T < 1.5$
F	$1.5 \leq \Delta T < 4.0$
G	$\Delta T \geq 4.0$

Source: INP (EPA 2000).

4 Review of data and discussion

Results of attended noise measurements are summarised in Table 4.1. Mannering Colliery noise contribution was determined for each survey using in-field observations and post-analysis of data as required (eg removing higher frequencies that are not mine related where applicable). Attended noise monitoring was completed during the evening and night periods on 22 October 2020.

The meteorological data for the monitoring period was sourced from Mannering Colliery's meteorological station to determine applicability of the noise criteria in accordance with the NMP. In accordance with the NMP, the noise criteria applied for three of the six measurements.

Site noise was inaudible during the evening and night attended monitoring at RA2 and RA3, and during the evening measurement at RA1. Typically, when a particular source is not audible above local ambient noise levels, the likely contribution of that source is at least 10 dB below the measured background (L_{A90}) level. Given that for the measurements where site noise was inaudible the measured L_{A90} noise levels were no more than 8 dB above the relevant $L_{Aeq,15 \text{ minute}}$ criteria, site $L_{Aeq,15 \text{ minute}}$ noise contributions were likely below the relevant criteria during these measurements.

During the night measurement at RA1 where site noise was audible, Mannering Colliery noise contributions were below (ie satisfied) the relevant noise criteria.

Low frequency noise was assessed by comparing the site one-third octave noise levels to the NPfI one-third octave LFN thresholds when the site was audible. In accordance with the NPfI, LFN modifying factors were found to be not relevant at any of the locations.

Mannering Colliery noise contributions were below (ie satisfied) the relevant noise criteria at all locations as per the NMP.

A review of site noise contributions ($L_{Aeq,15 \text{ minute}}$ and L_{Amax}) determined during this round of attended noise monitoring and the operational noise criteria presented in the Mod 5 PA (refer to Appendix B) showed that the latter would have likely been satisfied at all locations.

Table 4.1 Mannering Colliery attended noise monitoring results – October 2020

Location	Date	Start time	Total noise levels, dB							Site contributions, dB			Noise criteria (NMP), dB		Meteorological conditions ³ Criteria apply? (Y/N)	Exceedance, dB	Comments
			L _{Amin}	L _{A90}	L _{Aeq}	L _{A10}	L _{A1}	L _{Amax}	L _{Ceq}	Mod. factor ¹	L _{Aeq}	L _{Amax} ²	L _{Aeq}	L _{Amax} ²			
RA1	22/10	20:55 (Eve.)	41	48	64	68	74	81	73	N/A	IA	N/A	40	N/A	2.2 m/s @ 47° F class stability N	N/A	Site noise inaudible. Traffic on the Pacific Highway consistently audible. Hum from nearby petrol station consistently audible during road traffic lulls. Insects consistently audible. Wind in trees occasionally audible.
RA2	22/10	21:15 (Eve.)	34	36	39	41	42	50	58	N/A	IA	N/A	45	N/A	2.5 m/s @ 44° F class stability N	N/A	Site noise inaudible. VPPS hum consistently audible (dominant). Insects consistently audible. Occasional traffic on Tall Timbers Road and distant traffic. Plane passing above audible.
RA3	22/10	21:40 (Eve.)	36	38	41	43	47	57	60	N/A	IA	N/A	39	N/A	1.9 m/s @ 39° F class stability Y	Nil	Site noise inaudible. VPPS hum consistently audible (dominant). Insects consistently audible. CVC mobile equipment occasionally audible. Traffic on Tall Timbers Road. Plane passing above audible.
RA3	22/10	22:00 (Night)	37	39	40	41	43	54	61	N/A	IA	IA	39	49	2.1 m/s @ 38° F class stability N	N/A	Site noise inaudible. VPPS hum consistently audible (dominant). Insects consistently audible. CVC mobile equipment occasionally audible. Wind in foliage occasionally audible.
RA2	22/10	22:30 (Night)	32	34	36	38	42	58	58	N/A	IA	IA	43	47	1.5 m/s @ 33° F class stability Y	Nil	Site noise inaudible. VPPS hum consistently audible (dominant). Insects consistently audible. Occasional traffic on Tall Timbers Road, local and distant traffic.
RA1	22/10	22:55 (Night)	36	39	59	64	69	73	65	N/A	<35	<35	40	49	1.5 m/s @ 29° F class stability Y	Nil	Site noise from plant barely audible. VPPS hum barely audible. Traffic on the Pacific Highway consistently audible. Hum from nearby petrol station consistently audible during road traffic lulls. Insects consistently audible.

- Notes:
1. Modifying factor in accordance with Fact sheet C of the NPfI (refer to Section 2.2).
 2. For assessment purposes the L_{Amax} and the L_{A1,1 minute} are interchangeable.
 3. Meteorological data were taken as an average over 15 minutes from Mannering Colliery's weather station (Refer to Section 5.1).
 4. IA = inaudible.
 5. N/A = not applicable.

5 Conclusion

EMM has completed a review of mine noise from Mannering Colliery within the surrounding community based on attended measurements conducted on 22 October 2020.

The applicability of the noise criteria was assessed in accordance with the site's NMP with reference to weather data from Mannering Colliery's meteorological station located to the north of the site. In accordance with the NMP, the noise criteria applied for three of the six measurements.

The assessment of noise contributions from site included consideration of modifying factors for certain noise characteristics such as low frequency noise in accordance with the NPfl. Modifying factors were found to be not relevant at all monitoring locations.

Mannering Colliery noise contributions were determined to be below (ie satisfied) the noise criteria at all locations for this round of noise monitoring, as per the approved NMP. Further, site noise contributions would have also satisfied the operational noise criteria presented in the Mod 5 PA.

References

Mannering Colliery Noise Management Plan, 2019.

NSW Department of Planning and Environment, Project Approval MP 06_0311, 2020.

NSW Environment Protection Authority, Environment Protection License 191, 2019.

NSW Environment Protection Authority, Industrial Noise Policy, 2000.

NSW Environment Protection Authority, Noise Policy for Industry, 2017.

Appendix A

Glossary of acoustic terms

DRAFT

Several technical terms are discussed in this report. These are explained in Table A.1.

Table A.1 **Glossary of acoustic terms**

Term	Description
dB	Noise is measured in units called decibels (dB). There are several scales for describing noise, the most common being the 'A-weighted' scale. This attempts to closely approximate the frequency response of the human ear.
L _{A1}	The 'A-weighted' noise level which is exceeded 1% of the time.
L _{A1,1 minute}	The 'A-weighted' noise level exceeded for 1% of the specified time period of 1 minute.
L _{A10}	The 'A-weighted' noise level which is exceeded 10% of the time. It is approximately equivalent to the average of maximum noise level.
L _{A90}	Commonly referred to as the background noise level. The 'A-weighted' noise level exceeded 90% of the time.
L _{Aeq}	The energy average noise from a source. This is the equivalent continuous 'A-weighted' sound pressure level over a given period. The L _{Aeq,15 minute} descriptor refers to an L _{Aeq} noise level measured over a 15-minute period.
L _{Amin}	The minimum 'A-weighted' noise level received during a measuring interval.
L _{Amax}	The maximum root mean squared 'A-weighted' sound pressure level (or maximum noise level) received during a measuring interval.
L _{Ceq}	The equivalent continuous 'C-weighted' sound pressure level over a given period. The L _{Ceq,15 minute} descriptor refers to an L _{Ceq} noise level measured over a 15 minute period. C-weighting can be used to measure low frequency noise.
Day period	Monday – Saturday: 7 am to 6 pm, on Sundays and Public Holidays: 8 am to 6 pm.
Evening period	Monday – Saturday: 6 pm to 10 pm, on Sundays and Public Holidays: 6 pm to 10 pm.
Night period	Monday – Saturday: 10 pm to 7 am, on Sundays and Public Holidays: 10 pm to 8 am.
Temperature inversion	A meteorological condition where the atmospheric temperature increases with altitude.

It is useful to have an appreciation of decibel (dB), the unit of noise measurement. Table A.2 gives an indication as to what an average person perceives about changes in noise levels in the environment.

Table A.2 **Perceived change in noise**

Change in sound pressure level (dB)	Perceived change in noise in surrounding environment
up to 2	not perceptible
3	just perceptible
5	noticeable difference
10	twice (or half) as loud
15	large change
20	four times (or quarter) as loud

Examples of common noise levels are provided in Figure A.1.

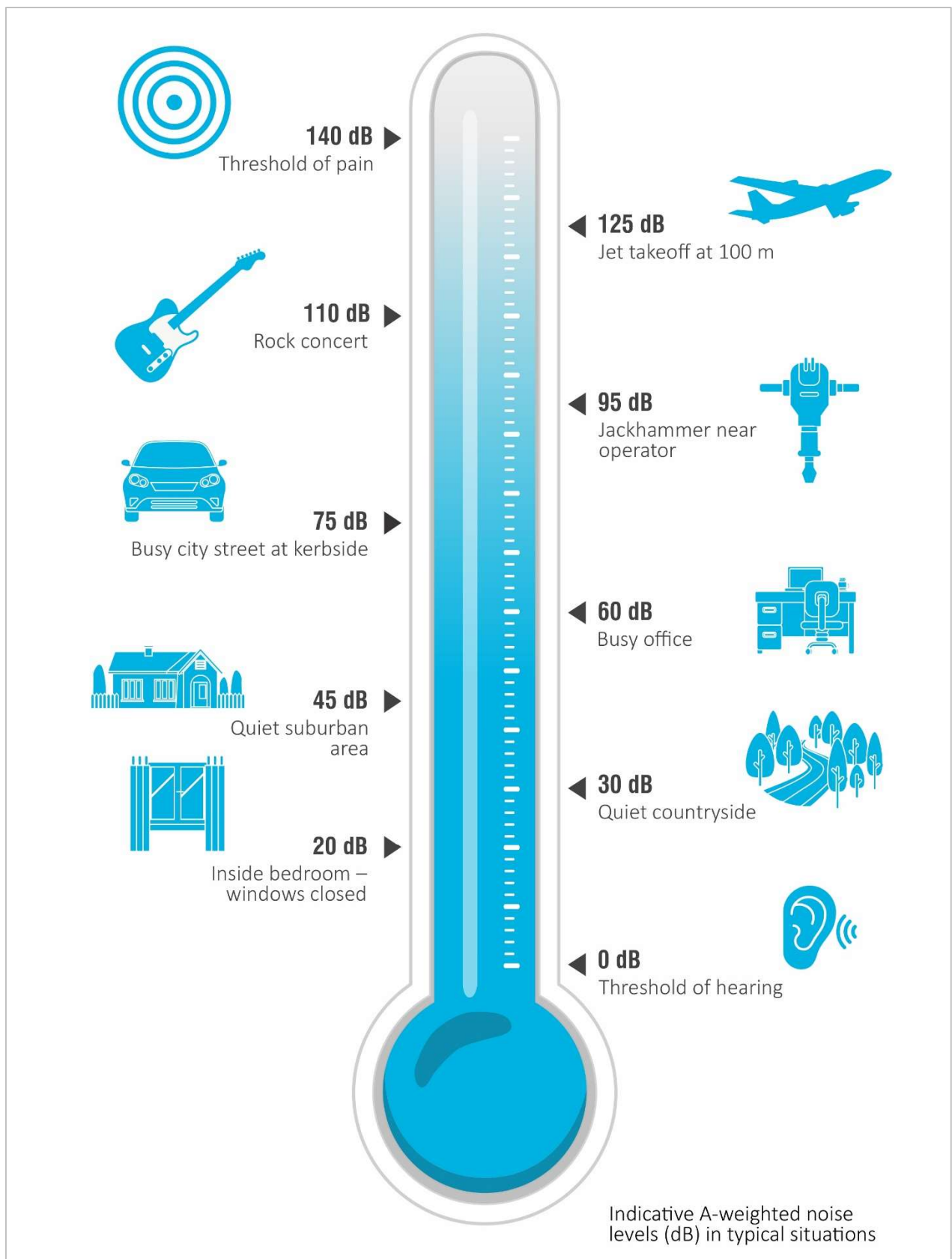


Figure A.1 Common noise levels

Appendix B

Project approval extract

DRAFT

SCHEDULE 3 SPECIFIC ENVIRONMENTAL CONDITIONS

NOISE

Construction Noise

1. The Applicant must ensure that the noise generated by any construction work is managed in accordance with the requirements outlined in the *Interim Construction Noise Guideline* (DECC, 2009).

Operational Noise Criteria

2. Except for the carrying out of construction works, the Applicant must ensure that the noise generated by the development does not exceed the criteria in Table 1 at any residence^a on privately-owned land.

Table 1: Operational noise criteria dB(A)

Noise Assessment Location	Day <i>L_{Aeq}</i> (15 min)	Evening <i>L_{Aeq}</i> (15 min)	Night <i>L_{Aeq}</i> (15 min)	Night <i>L_{A1}</i> (1 min)
4 – di Rocco	40	36	36	46
5 - Keighran	40	39	39	49
6 – Swan	40	37	37	47
7 – Druitt	40	35	35	45
8 – Macquarie Shores Home Village	42	42	42	47
9 - Jeans	40	37	37	47
11 - Jeans	40	36	36	46
18 - Jeans	40	36	36	46
20 – Knight and all other privately-owned residences	40	36	36	46

^a The Noise Assessment Locations referred to in Table 1 are shown in Appendix 4.

Noise generated by the development must be monitored and measured in accordance with the relevant procedures and exemptions (including certain meteorological conditions) of the *NSW Noise Policy for Industry* (EPA, 2017).

3. The noise criteria in Table 1 do not apply if the Applicant has an agreement with the owner/s of the relevant residence or land to exceed the noise criteria, and the Applicant has advised the Department in writing of the terms of this agreement.

Noise Operating Conditions

- 3A. The Applicant must:
 - (a) take all reasonable steps to minimise noise from construction and operational activities, including low frequency noise and other audible characteristics, associated with the development;
 - (b) implement reasonable and feasible noise attenuation measures on all plant and equipment that will operate in noise sensitive areas;
 - (c) operate a comprehensive noise management system commensurate with the risk of impact;
 - (d) take all reasonable steps to minimise the noise impacts of the development during noise-enhancing meteorological conditions when the noise criteria in this consent do not apply (see NPfI);
 - (e) carry out regular attended noise monitoring (at least once a month, unless otherwise agreed by the Planning Secretary) to determine whether the development is complying with the relevant conditions of this consent;

- (f) regularly assess the noise monitoring data and modify or stop operations on the site to ensure compliance with the relevant conditions of this consent; and
 - (g) implement reasonable and feasible measures to further enclose the structure housing the coal crusher in order to further mitigate noise from operational activities.
- 3B. The Applicant must decommission the surface rotary breaker identified in the Statement of Commitments at Appendix 3, within 3 months of approval of Modification 5.

Noise Management Plan

- 3C. The Applicant must prepare a Noise Management Plan for the development to the satisfaction of the Planning Secretary. This plan must:
- (a) be prepared by a suitably qualified and experienced person/s whose appointment has been endorsed by the Planning Secretary;
 - (b) describe the measures to be implemented to ensure:
 - i. compliance with the noise criteria and operating conditions in this consent;
 - ii. best practice management is being employed; and
 - iii. noise impacts of the development are minimised during noise-enhancing meteorological conditions when the noise criteria in this consent do not apply (see NPfI);
 - (c) describe the noise management system in detail; and
 - (d) include a monitoring program that:
 - i. uses a combination of real-time and supplementary attended monitoring to evaluate the performance of the development;
 - ii. monitors noise at the nearest and/or most affected residences;
 - iii. includes a program to calibrate and validate the real-time noise monitoring results with the attended monitoring results over time;
 - iv. adequately supports the noise management system;
 - v. includes a protocol for distinguishing noise emissions of the development from any neighbouring developments; and
 - vi. includes a protocol for identifying any noise-related exceedance, incident or non-compliance and for notifying the Department and relevant stakeholders of any such event.

The Applicant must implement the Noise Management Plan as approved by the Planning Secretary.

SUBSIDENCE

4. The Applicant must limit its coal extraction methods on the site to first workings only, and must not undertake second workings.
5. Deleted.

SOIL AND WATER

Discharge

6. The Applicant must only discharge water from the site as expressly provided for by its EPL.
7. The Applicant must investigate, assess and report on the ecological interactions of minewater discharged from the site with the aquatic ecology of the unnamed creek and wetlands (and associated vegetation) between the minewater discharge point/s and Lake Macquarie. This report must:
- (a) be prepared in consultation with EPA by suitably qualified expert/s whose appointment/s have been approved by the Planning Secretary;
 - (b) be submitted to the Planning Secretary by the end of March 2009; and
 - (c) assess the probable alterations in the local ecology attributable to previous and proposed minewater discharges and any future cessation of minewater discharge flows.

Water Management Plan

8. The Applicant must prepare a Water Management Plan for the development to the satisfaction of the Planning Secretary. This plan must:
- (a) be prepared in consultation with DPIE Water by suitably qualified expert/s whose appointment/s have been approved by the Planning Secretary;
 - (b) be submitted to the Planning Secretary by the end of March 2009; and
 - (c) include a:
 - Site Water Balance;

Appendix C

EPL extract

DRAFT

Environment Protection Licence

Licence - 191

- L3.2 Exceedance of the volume limit for Point 1 is permitted only if the discharge from Point 1 occurs solely as a result of rainfall at the premises exceeding 10mm during the 24 hours immediately prior to the commencement of discharge

L4 Waste

- L4.1 The licensee must not cause, permit or allow any waste to be received at the premises, except the wastes expressly referred to in the column titled "Waste" and meeting the definition, if any, in the column titled "Description" in the table below.

Any waste received at the premises must only be used for the activities referred to in relation to that waste in the column titled "Activity" in the table below.

Any waste received at the premises is subject to those limits or conditions, if any, referred to in relation to that waste contained in the column titled "Other Limits" in the table below.

This condition does not limit any other conditions in this licence.

Code	Waste	Description	Activity	Other Limits
NA	Waste	Any other waste received on the premises for storage, treatment, processing, sorting or disposal and which receipt is not a scheduled activity under Schedule 1 of the POEO Act, as in force from time to time.		
NA	General or Specific exempted waste	Waste that meets all the conditions of a resource recovery exemption under Clause 51A of the Protection of the Environment Operations (Waste) Regulation 2014	As specified in each particular resource recovery exemption	N/A

- L4.2 The licensee must not cause, permit or allow any waste generated outside the premises to be received at the premises for storage, treatment, processing, reprocessing or disposal or any waste generated at the premises to be disposed of at the premises, except as expressly permitted by the licence.
- L4.3 This condition only applies to the storage, treatment, processing, reprocessing or disposal of waste at the premises if it requires an environment protection licence.

L5 Noise limits

Note: Noise limits are not specified as a condition of this licence. Noise limits are prescribed with the conditions of Project Approval 06_0311 granted under the *Environmental Planning and Assessment Act 1979*. Under

Environment Protection Licence

Licence - 191



the *Environmental Planning and Assessment Act 1979* the Department of Planning is the appropriate authority in respect of the administration and regulation of the Project Approval.

4 Operating Conditions

O1 Activities must be carried out in a competent manner

O1.1 Licensed activities must be carried out in a competent manner.

This includes:

- a) the processing, handling, movement and storage of materials and substances used to carry out the activity; and
- b) the treatment, storage, processing, reprocessing, transport and disposal of waste generated by the activity.

O2 Maintenance of plant and equipment

O2.1 All plant and equipment installed at the premises or used in connection with the licensed activity:

- a) must be maintained in a proper and efficient condition; and
- b) must be operated in a proper and efficient manner.

O3 Dust

O3.1 The premises must be maintained in a condition which minimises or prevents the emission of dust from the premises.

O3.2 Activities occurring in or on the premises must be carried out in a manner that will minimise the generation, or emission from the premises, of wind-blown or traffic generated dust.

O3.3 All trafficable areas, coal storage areas and vehicle manoeuvring areas in or on the premises must be maintained, at all times, in a condition that will minimise the generation, or emission from the premises, of wind-blown or traffic generated dust.

O3.4 The tailgates of all haulage trucks leaving the premises must be securely fixed prior to loading or immediately after unloading to prevent loss of materials.

O3.5 Coal stockpiles must be maintained in a condition that will minimise the generation and emission of dust on the premises.

O4 Emergency response

Note: The licensee must maintain, and implement as necessary, a current Pollution Incident Response Management Plan (PIRMP) for the premises. The PIRMP must be developed in accordance with the requirements in Part 5.7A of the Protection of the Environment Operations (POEO) Act 1997 and POEO regulations. The licensee must keep the incident response plan on the premises at all times. The incident

Appendix D

Calibration certificates

DRAFT

CERTIFICATE OF CALIBRATION

CERTIFICATE NO.: SLM 26291 & FILT 5615

Equipment Description: Sound Level Meter

Manufacturer: B & K

Model No: 2250 **Serial No:** 2759405

Microphone Type: 4189 **Serial No:** 2888134

Preamplifier Type: ZC0032 **Serial No:** 16037

Filter Type: 1/3 Octave **Serial No:** 2759405

Comments: All tests passed for class 1.
(See over for details)

Owner: EMM Consulting
Level 3, 175 Scott Street
Newcastle, NSW 2300

Ambient Pressure: 1007 hPa ± 1.5 hPa

Temperature: 24 °C $\pm 2^\circ$ C **Relative Humidity:** 53% $\pm 5\%$

Date of Calibration: 05/02/2020 **Issue Date:** 05/02/2020

Acu-Vib Test Procedure: AVP10 (SLM) & AVP06 (Filters)

CHECKED BY: JKB

AUTHORISED SIGNATURE:

Jack Kiehl

Accredited for compliance with ISO/IEC 17025 - Calibration

The results of the tests, calibration and/or measurements included in this document are traceable to Australian/national standards.



ACU-VIB

ELECTRONICS

HEAD OFFICE

Unit 14, 22 Hudson Ave. Castle Hill NSW 2154

Tel: (02) 96808133 Fax: (02) 96808233

Mobile: 0413 809806

web site: www.acu-vib.com.au

Accredited Lab. No. 9262
Acoustic and Vibration
Measurements

Page 1 of 2
AVCERT10 Rev. 1.3 15.05.18

CERTIFICATE OF CALIBRATION

CERTIFICATE No: 26290

EQUIPMENT TESTED: Sound Level Calibrator

Manufacturer: B & K

Type No: 4230

Serial No: 1276091

Owner: EMM Consulting
Level 3, 175 Scott Street
Newcastle, NSW 2300

Tests Performed: Measured output pressure level was found to be:

Parameter	Pre-Adj	Adj Y/N	Output: (db re 20 μ Pa)	Frequency: (Hz)	THD&N (%)
Level 1:	NA	N	93.84	990.59	2.82
Level 2:	NA	N	NA	NA	NA
Uncertainty:			± 0.11 dB	$\pm 0.05\%$	$\pm 0.20\%$
Uncertainty (at 95% c.i.) k=2					

CONDITION OF TEST:

Ambient Pressure: 1007 hPa ± 1.5 hPa **Relative Humidity:** 49% $\pm 5\%$

Temperature: 24 $^{\circ}$ C $\pm 2^{\circ}$ C

Date of Calibration: 05/02/2020

Issue Date: 05/02/2020

Acu-Vib Test Procedure: AVP02 (Calibrators)

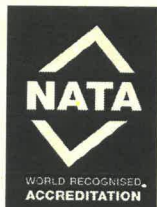
Test Method: AS IEC 60942 - 2017

CHECKED BY: *AKB* **AUTHORISED SIGNATURE:** *Jack Rielt*

Accredited for compliance with ISO/IEC 17025 - Calibration

The results of the tests, calibration and/or measurements included in this document are traceable to Australian/national standards.

The uncertainties quoted are calculated in accordance with the methods of the ISO Guide to the Uncertainty of Measurement and quoted at a coverage factor of 2 with a confidence interval of approximately 95%.



Accredited Lab. 9262
Acoustic and Vibration
Measurements



HEAD OFFICE
Unit 14, 22 Hudson Ave. Castle Hill NSW 2154
Tel: (02) 96808133 Fax: (02) 96808233
Mobile: 0413 809806
Web site: www.acu-vib.com.au

