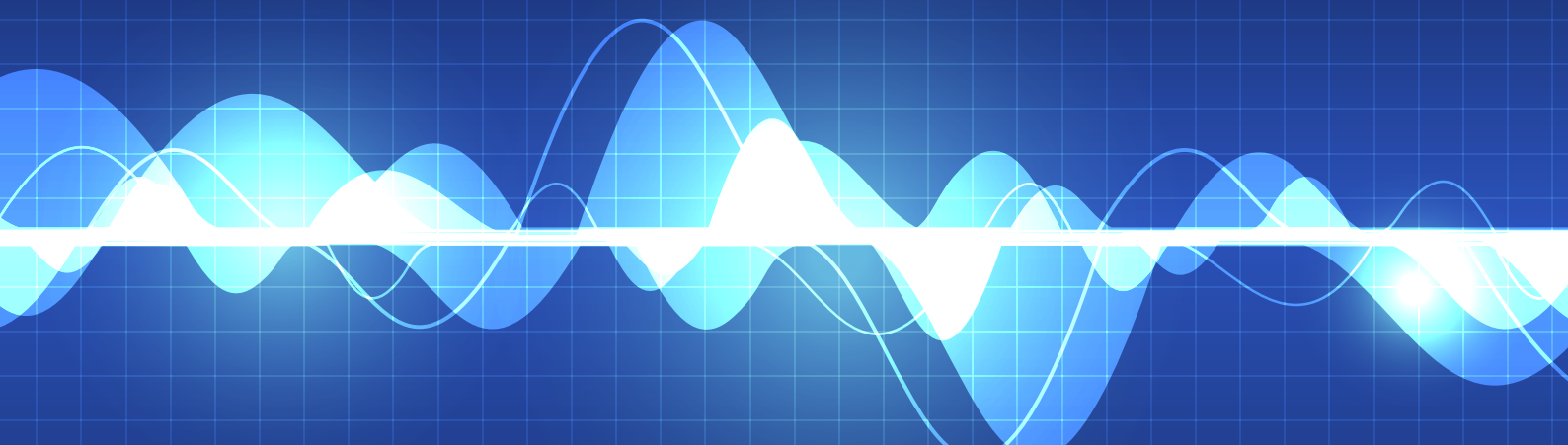


Chain Valley Colliery

Quarterly attended noise monitoring

Quarter 3 - 2020

Prepared for Great Southern Energy Pty Ltd (trading as DeltaCoal)
October 2020





Servicing projects throughout Australia and internationally

SYDNEY

Ground floor, 20 Chandos Street
St Leonards NSW 2065
T 02 9493 9500
F 02 9493 9599

NEWCASTLE

Level 1, 146 Hunter Street
Newcastle NSW 2300
T 02 4907 4800
F 02 4907 4899

BRISBANE

Level 4, Suite 01, 87 Wickham Terrace
Spring Hill QLD 4000
T 07 3839 1800
F 07 3839 1866

ADELAIDE

Level 1, 70 Pirie Street
Adelaide SA 5000
T 08 8232 2253

PERTH

PO Box 8155
Fremantle WA 6160

CANBERRA

PO Box 9148
Deakin ACT 2600

Chain Valley Colliery

Quarterly attended noise monitoring - Quarter 3 2020

Prepared for Great Southern Energy Pty Ltd (trading as DeltaCoal)
October 2020

EMM Newcastle
Level 3, 175 Scott Street
Newcastle NSW 2300

T 02 4907 4800
E info@emmconsulting.com.au

www.emmconsulting.com.au

Chain Valley Colliery

Quarterly attended noise monitoring - Quarter 3 2020

Report Number

H200049 RP3

Client

Great Southern Energy Pty Ltd (trading as DeltaCoal)

Date

1 October 2020

Version

v1 Final

Prepared by



Teanuanua Villierme

Senior Acoustic Consultant

1 October 2020

Approved by



Katie Teyhan

Associate

1 October 2020

This report has been prepared in accordance with the brief provided by the client and has relied upon the information collected at the time and under the conditions specified in the report. All findings, conclusions or recommendations contained in the report are based on the aforementioned circumstances. The report is for the use of the client and no responsibility will be taken for its use by other parties. The client may, at its discretion, use the report to inform regulators and the public.

© Reproduction of this report for educational or other non-commercial purposes is authorised without prior written permission from EMM provided the source is fully acknowledged. Reproduction of this report for resale or other commercial purposes is prohibited without EMM's prior written permission.

Table of Contents

1	Introduction	1
2	Noise limits	2
2.1	Operational and sleep disturbance noise limits	2
2.2	Low frequency noise criteria	3
3	Assessment methodology	5
3.1	Attended noise monitoring	5
3.2	Instrumentation	5
3.3	Determination of stability category	7
4	Review of data and discussion	8
5	Conclusion	21
	References	22

Appendices

Appendix A	Glossary of acoustic terms	A.1
Appendix B	Development consent extract	B.1
Appendix C	EPL extract	C.1
Appendix D	Calibration certificates	D.1

Tables

Table 2.1	Noise impact assessment criteria	2
Table 2.2	One-third octave low frequency noise threshold levels	3
Table 3.1	Attended noise monitoring locations	5
Table 3.2	Stability categories and temperature lapse rates	7
Table 4.1	Chain Valley Colliery attended noise monitoring results – Q3 (September) 2020	9
Table A.1	Glossary of acoustic terms	A.2
Table A.2	Perceived change in noise	A.2

Figures

Figure 3.1	Site boundary and noise monitoring locations	6
Figure A.1	Common noise levels	A.3

1 Introduction

EMM Consulting Pty Limited (EMM) was engaged to undertake operator-attended noise surveys on behalf of DeltaCoal Pty Limited (DeltaCoal).

The purpose of the monitoring was to address requirements of the approved Chain Valley Colliery Noise Management Plan (NMP), prepared to satisfy the requirements of the Development Consent SSD-5465 (DC) and Environment Protection License (EPL) 1770.

The NMP requires noise monitoring to occur on a quarterly basis. This report presents the results and findings of attended noise monitoring conducted during the third quarter (Q3) of 2020, on 7 and 8 September 2020.

The following material was referenced as part of this assessment:

- Department of Planning and Environment (DPE), Development Consent SSD-5465, as modified (Modification 3) on 26 June 2020 (current as of the monitoring period 7 and 8 September 2020);
- Environment Protection Authority (EPA), Environment Protection License 1770, as varied on 2 April 2019 (current as of the monitoring period 7 and 8 September 2020);
- Chain Valley Colliery Noise Management Plan, approved by DPE on 12 March 2014;
- NSW EPA, Industrial Noise Policy (INP), 2000;
- NSW EPA, Industrial Noise Policy application notes, 2017; and
- NSW EPA, Noise Policy for Industry (NPfI), 2017.

It is noted that the NMP is currently being updated to satisfy the requirements of the DC Modification 3 (approved June 2020). Attended noise monitoring undertaken for this round of monitoring (Q3 2020) was completed in accordance with the approved NMP (March 2014) which was prepared to satisfy the requirements of the DC Modification 2 (approved December 2015). Notwithstanding, the assessment locations and noise impact assessment criteria in the DC Modification 2 have not changed in the DC Modification 3.

A glossary of acoustic terms relevant to this report is provided in Appendix A.

2 Noise limits

2.1 Operational and sleep disturbance noise limits

Chain Valley Colliery noise limits are provided in Table 1, Condition 7 of Schedule 3 of the DC and Conditions L5.1 and L5.2 of the EPL. Extracts of the relevant sections of the DC and EPL pertaining to noise are provided in Appendix B and Appendix C, respectively. Assessment locations relevant noise impact assessment criteria are summarised in Table 2.1.

Table 2.1 Noise impact assessment criteria

Assessment location	Day	Evening	Night	Night
	$L_{Aeq,15\text{ minute}}$ dB	$L_{Aeq,15\text{ minute}}$ dB	$L_{Aeq,15\text{ minute}}$ dB	$L_{A1,1\text{ minute}}$ dB
R8 (EPL Point 9)	38	38	38	45
R11 (EPL Point 12)	49	49	49	54
R12 (EPL Point 13)	49	49	49	53
R13 (EPL Point 14)	43	43	43	49
R15 (EPL Point 16)	36	36	36	45
R19 (EPL Point 20)	37	37	37	45
R22 (EPL Point 23)	46	46	46	46
All other privately-owned land	35	35	35	45

It is of note that the noise limits outlined in the DC and EPL are inconsistent. The EPL appears to contain a typographical error for the noise limits applicable at assessment location R22 (EPL Point 23). The DC outlines noise limits of $L_{Aeq,15\text{ minute}}$ 46 dB for the day and evening periods, and noise limits of $L_{Aeq,15\text{ minute}}$ 46 dB and $L_{A1,1\text{ minute}}$ 46 dB for the night period. However, the EPL outlines noise limits of $L_{Aeq,15\text{ minute}}$ 46 dB for the day and evening periods, and noise limits of $L_{Aeq,15\text{ minute}}$ 36 dB and $L_{A1,1\text{ minute}}$ 45 dB for the night period.

For the purposes of this assessment, it is assumed that the R22 (EPL Point 23) noise limits outlined in the EPL are a typographical error and as such, the noise limits specified in DC have been used for assessing compliance at R22.

The DC specifies the following meteorological conditions under which noise limits do not apply:

- during periods of rain or hail;
- average wind speed at microphone height exceeds 5 m/s;
- wind speeds greater than 3 m/s at 10 m above ground level; or
- temperature inversion conditions greater than 3°C/100 m.

The EPL specifies the following meteorological conditions under which noise limits do not apply:

- wind speeds greater than 3 m/s at 10 m above ground level;
- stability category F temperature inversion conditions and with wind speeds greater than 2 m/s at 10 m above ground level; or

- stability category G temperature inversion conditions.

If noise limits are satisfied adopting the EPL meteorological conditions exclusion rules, then the DC noise limits will also be met.

For this assessment, the recorded L_{Amax} has been used as a conservative estimate of the $L_{A1,1 \text{ minute}}$. The INP application notes (EPA 2013) state that the EPA accepts sleep disturbance analysis based on either the $L_{A1,1 \text{ minute}}$ or L_{Amax} metrics, with the L_{Amax} resulting in a more conservative assessment of site noise emissions.

The DC and EPL state that modifying factor corrections shall be applied to the measured mine noise levels before comparison to the relevant noise limits, where applicable, in accordance with Section 4 of the INP. The INP application notes state that Section 4 of the INP has been withdrawn and that Fact Sheet C of the NPfI (EPA 2017) now applies for the application of modifying factors.

2.2 Low frequency noise criteria

Condition 5 in Appendix 8 of the DC and L5.9 of the EPL state that noise generated by Chain Valley Colliery is to be measured in accordance with the relevant requirements of the INP. The INP application notes state that modifying factor adjustments outlined in Fact Sheet C of the NPfI must be considered when assessing certain characteristics of a noise source such as low frequency noise.

Fact sheet C of the NPfI (EPA 2017) provides guidelines for applying modifying factor adjustments to account for low frequency noise emissions. The NPfI specifies that a difference of 15 dB or more between site 'C-weighted' and site 'A-weighted' noise emission levels identifies the potential for an unbalanced noise spectrum and potential increased annoyance at a residential receiver.

Where a difference of 15 dB or more between site 'C-weighted' and site 'A-weighted' noise emission levels is identified, the one-third octave noise levels recorded should be compared to the threshold values in Table C2 of the NPfI (EPA 2017), which has been reproduced in Table 2.2.

Table 2.2 One-third octave low frequency noise threshold levels

One-third octave $L_{Aeq,15 \text{ minute}}$ threshold levels													
Frequency (Hz)	10	12.5	16	20	25	31.5	40	50	63	80	100	125	160
dB (Z)	92	89	86	77	69	61	54	50	50	48	48	46	44

The following modifying factor corrections for low frequency noise are to be applied to the site $L_{Aeq,15 \text{ minute}}$ noise contribution where the site 'C-weighted' and site 'A-weighted' noise emission level is 15 dB or more and:

- where any of the one-third octave noise levels in Table 2.2 are exceeded by up to and including 5 dB and cannot be mitigated, a 2 dB positive adjustment to measured/predicted A-weighted levels applies for the evening/night period; or
- where any of the one-third octave noise levels in Table 2.2 are exceeded by more than 5 dB and cannot be mitigated, a 5 dB positive adjustment to measured/predicted A-weighted levels applies for the evening/night period and a 2 dB positive adjustment applies for the daytime period.

Hence, where possible throughout each survey the operator has estimated the difference between site 'C-weighted' and site 'A-weighted' noise emission levels by matching audible sounds with the response of the sound analyser ($L_{Ceq}-L_{Aeq}$). Where this was found to be 15 dB or greater, the measured one-third octave frequencies have

been compared to the values in Table 2.2 to identify the relevant modifying factor adjustments (if applicable). This method for the application of modifying factor adjustments for low frequency noise has been applied to this assessment as presented in Section 4.

It is of note that the NPfI (EPA 2017) states that low frequency noise adjustments only apply under the standard or noise-enhancing (i.e. applicable) meteorological conditions.

3 Assessment methodology

3.1 Attended noise monitoring

To quantify noise emissions from Chain Valley Colliery, attended noise monitoring surveys were completed at representative locations, in accordance with the approved NMP and EPL. It is noted that the NMP is currently being updated to satisfy the requirements of the DC Modification 3.

Noise monitoring locations required as per the NMP, as well as two additional locations (R12 and R13) as per the EPL, and their coordinates are listed in Table 3.1 and are shown in Figure 3.1.

Table 3.1 Attended noise monitoring locations

Monitoring location	Assessment location	Description	Coordinates (MGA56)	
			Easting	Northing
ATN001 ¹	R9	Griffith Street, Mannering Park	364140	6330594
ATN002	R11	Lakeshore Avenue, Kingfisher Shores	365218	6329388
ATN003	R15	Short Street, Macquarie Shores	365165	6328323
ATN004	R14	Lloyd Avenue, Chain Valley Bay	365949	6328530
ATN005	R17	Teragalin Drive, Chain Valley Bay	366560	6328590
ATN006	R19	Sunset Parade, Chain Valley Bay	366305	6329321
ATN007 ²	R22	Cams Boulevard, Chain Valley Bay	366425	6331135
R12 ³	R12 (EPL Point 13)	Lakeshore Avenue, Kingfisher Shores	365185	6329352
R13 ⁴	R13 (EPL Point 14)	Karoola Avenue, Kingfisher Shores	365391	6329169

Notes:

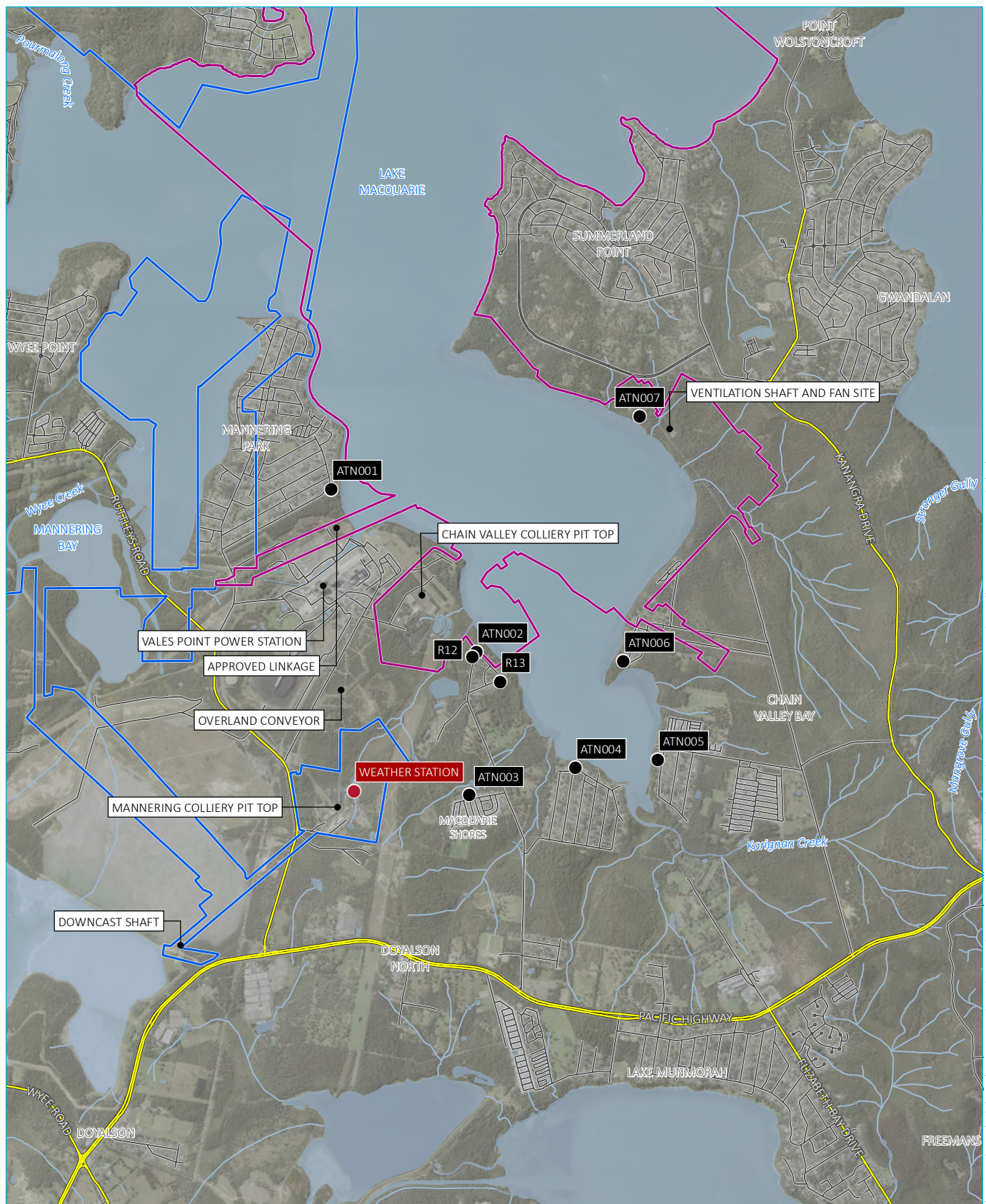
1. Noise monitoring at ATN001 (for R9) is also representative of assessment location R8, however R8 has higher (less stringent) noise limits.
2. Due to access issues, noise monitoring for ATN007 was conducted at an intermediate location with site contributions calculated back to R22.
3. Noise monitoring at R12 is conducted as required by the EPL. This is completed in conjunction with ATN002 as this monitoring location is representative of both R11 and R12.
4. Noise monitoring at R13 is conducted as required by the EPL.

As per the NMP, attended noise monitoring is scheduled considering the occurrence of regular operations at Chain Valley Colliery. Noise monitoring avoids scheduled down-time or maintenance. Regular operations were occurring during this round of noise monitoring.

3.2 Instrumentation

Brüel & Kjær (B&K) 2250 and 2270 Type 1 sound analysers (s/n 2759405 and 3027603, respectively) were used to conduct 15-minute attended measurements and record one-third octave frequency and statistical noise indices. The sound analysers were calibrated before and on completion of the survey using a B&K Type 4230 calibrator (s/n 1276091). Instrumentation calibration certificates are provided in Appendix D.

Where possible throughout each survey, the operator has quantified the contribution of site noise and other significant noise sources. This was done by matching audible sounds with the response of the sound analyser (where applicable) and/or via post-analysis of data (e.g. low-pass filtering).



KEY

- Chain Valley Colliery development consent boundary
- Mannerling Colliery project approval boundary
- Noise monitoring location
- Weather station
- Main road
- Local road
- Watercourse/drainage line
- Waterbody

Site boundary and noise monitoring locations

Chain Valley Colliery noise monitoring
Figure 3.1

3.3 Determination of stability category

For the purpose of this assessment and as required by the DC, EPL and NMP, stability categories were determined for each 15-minute attended monitoring period. This was completed using the sigma-theta (ST) method as per Appendix E of the INP (EPA 2000). The ST data for the monitoring period was obtained from Mannering Colliery's meteorological station located approximately 1 km to the south of Chain Valley Colliery.

Table E1 of the INP (EPA 2000) is reproduced in Table 3.2 and presents the stability categories and associated ranges in temperature lapse rates.

Table 3.2 Stability categories and temperature lapse rates

Stability category	Temperature lapse rate (ΔT) ($^{\circ}\text{C}/100\text{ m}$)
A	$\Delta T < -1.9$
B	$-1.9 \leq \Delta T < -1.7$
C	$-1.7 \leq \Delta T < -1.5$
D	$-1.5 \leq \Delta T < -0.5$
E	$-0.5 \leq \Delta T < 1.5$
F	$1.5 \leq \Delta T < 4.0$
G	$\Delta T \geq 4.0$

Source: INP (EPA 2000).

4 Review of data and discussion

Results of attended noise measurements are summarised in Table 4.1. Chain Valley Colliery noise contribution was determined for each survey using in-field observations and post-analysis of data as required (e.g. removing higher frequencies that are not mine related i.e. above 630 Hz). Attended noise monitoring was completed on 7 and 8 September 2020 for 1.5 hours at each monitoring location during the day period, 30 minutes at each monitoring location during the evening period and 1 hour at each monitoring location during the night-time period. Results are presented in 15-minute intervals for each location for direct comparison to the relevant noise limits.

The meteorological data for the monitoring period was sourced from Mannering Colliery's meteorological station to determine applicability of noise limits in accordance with the DC and EPL. In accordance with the DC, noise limits were not applicable for 65 of the 90 measurements due to the presence of temperature inversion conditions greater than 3°C/100 m or wind speeds greater than 3 m/s during the relevant measurements. In accordance with the EPL, noise limits were not applicable for 36 of the 90 measurements due to the presence of stability category F temperature inversion conditions and wind speeds greater than 2 m/s or wind speeds greater than 3 m/s during the relevant measurements.

Measured site noise levels did not exceed the relevant LFN threshold levels during most of the measurements where Chain Valley Colliery was audible, and hence LFN modifying factors were found to be not relevant for most of the measurements. Measured site noise levels exceeded the relevant LFN threshold levels during the evening and night-time measurements at ATN007. Therefore, in accordance with the NPfI, a 2 dB positive adjustment was applied to the estimated site $L_{Aeq,15\text{ minute}}$ noise contributions for these measurements (as shown in Table 4.1).

Site noise was inaudible during 62 of the 90 measurements. Typically, when a particular source is not audible above local ambient noise levels, the likely contribution of that source is at least 10 dB below the measured background (L_{A90}) level. For all of the measurements where site noise was inaudible, the measured L_{A90} noise levels were no more than 7 dB above the relevant $L_{Aeq,15\text{ minute}}$ limits. Hence, site $L_{Aeq,15\text{ minute}}$ noise contributions were likely below the relevant limits during these measurements.

At the five monitoring locations where site noise was audible, including ATN002 (day and night), ATN003 (day), ATN004 (night), ATN007 (day, evening and night) and R12 (day and night), Chain Valley Colliery noise contributions were below (satisfied) the relevant noise limits.

Table 4.1 Chain Valley Colliery attended noise monitoring results – Q3 (September) 2020

Location	Date	Start time	Total noise levels, dB							Site contributions, dB			Noise limits, dB		Meteorological conditions ³ Limits apply? (DC/EPL) (Y/N)	Exceedance, dB (DC/EPL)	Comments
			L _{Amin}	L _{A90}	L _{Aeq}	L _{A10}	L _{A1}	L _{Amax}	L _{Ceq}	LFN mod. factor ¹	L _{Aeq}	L _{Amax} ²	L _{Aeq}	L _{Amax} ²			
ATN001	7/9	9:36 (Day)	38	40	47	44	58	71	63	Nil	IA	N/A	35	N/A	2.6 m/s @ 8° A class stability Y/Y	Nil/Nil	Site inaudible. VPPS noise and bird noise consistently audible. Wind in foliage frequently audible. Traffic passbys, distant traffic, distant dogs barking and resident noise occasionally audible.
ATN001	7/9	9:51 (Day)	37	39	53	48	66	80	64	Nil	IA	N/A	35	N/A	2.8 m/s @ 19° A class stability Y/Y	Nil/Nil	Site inaudible. VPPS noise and bird noise consistently audible. Wind in foliage frequently audible. Traffic passbys, distant traffic, distant dogs barking and resident noise occasionally audible.
ATN001	7/9	10:06 (Day)	38	39	56	49	68	85	66	Nil	IA	N/A	35	N/A	2.4 m/s @ 31° A class stability Y/Y	Nil/Nil	Site inaudible. VPPS noise and bird noise consistently audible. Wind in foliage frequently audible. Traffic passbys, distant traffic, distant dogs barking and resident noise occasionally audible.
ATN001	7/9	10:21 (Day)	37	39	52	49	66	75	64	Nil	IA	N/A	35	N/A	2.8 m/s @ 10° A class stability Y/Y	Nil/Nil	Site inaudible. VPPS noise and bird noise consistently audible. Wind in foliage frequently audible. Traffic passbys, distant traffic, distant dogs barking and resident noise occasionally audible.
ATN001	7/9	10:36 (Day)	38	40	53	49	66	78	64	Nil	IA	N/A	35	N/A	2.4 m/s @ 40° A class stability Y/Y	Nil/Nil	Site inaudible. VPPS noise and bird noise consistently audible. Wind in foliage frequently audible. Traffic passbys, distant traffic, distant dogs barking and resident noise occasionally audible.
ATN001	7/9	10:51 (Day)	38	40	49	46	62	73	64	Nil	IA	N/A	35	N/A	3 m/s @ 38° A class stability Y/Y	Nil/Nil	Site inaudible. VPPS noise and bird noise consistently audible. Wind in foliage frequently audible. Traffic passbys, distant traffic, distant dogs barking and resident noise occasionally audible.
ATN001	7/9	20:38 (Eve.)	40	42	44	46	49	56	63	Nil	IA	N/A	35	N/A	1.2 m/s @ 36° F class stability N/Y	'N/A'/Nil	Site inaudible. VPPS noise and wind in foliage consistently audible. Resident noise, distant traffic and traffic passbys occasionally audible.
ATN001	7/9	20:53 (Eve.)	40	42	44	45	47	56	62	Nil	IA	N/A	35	N/A	1.5 m/s @ 19° F class stability N/Y	'N/A'/Nil	Site inaudible. VPPS noise and wind in foliage consistently audible. Resident noise, distant traffic and traffic passbys occasionally audible.
ATN001	7/9	23:10 (Night)	38	40	42	43	45	52	61	Nil	IA	IA	35	45	2.1 m/s @ 21° F class stability N/N	'N/A'/'N/A'	Site inaudible. VPPS noise consistently audible. Wind in foliage frequently audible. Bird noise, resident noise, nearby animals and distant traffic occasionally audible.

Table 4.1 Chain Valley Colliery attended noise monitoring results – Q3 (September) 2020

Location	Date	Start time	Total noise levels, dB							Site contributions, dB			Noise limits, dB		Meteorological conditions ³ Limits apply? (DC/EPL) (Y/N)	Exceedance, dB (DC/EPL)	Comments
			L _{Amin}	L _{A90}	L _{Aeq}	L _{A10}	L _{A1}	L _{Amax}	L _{Ceq}	LFN mod. factor ¹	L _{Aeq}	L _{Amax} ²	L _{Aeq}	L _{Amax} ²			
ATN001	7/9	23:25 (Night)	38	40	53	43	58	83	62	Nil	IA	IA	35	45	1.3 m/s @ 3° F class stability N/Y	'N/A'/Nil	Site inaudible. VPPS noise consistently audible. Wind in foliage frequently audible. Bird noise, resident noise, nearby animals and distant traffic occasionally audible. Traffic passby audible on one occasion.
ATN001	7/9	23:40 (Night)	38	40	41	42	44	59	61	Nil	IA	IA	35	45	1.5 m/s @ 359° F class stability N/Y	'N/A'/Nil	Site inaudible. VPPS noise consistently audible. Wind in foliage frequently audible. Bird noise, resident noise, nearby animals and distant traffic occasionally audible.
ATN001	7/9	23:55 (Night)	38	40	42	42	45	54	61	Nil	IA	IA	35	45	1.3 m/s @ 340° F class stability N/Y	'N/A'/Nil	Site inaudible. VPPS noise consistently audible. Wind in foliage frequently audible. Bird noise, resident noise, nearby animals and distant traffic occasionally audible.
ATN002	7/9	13:44 (Day)	38	40	48	50	61	69	58	Nil	<40	N/A	49	N/A	3.3 m/s @ 71° A class stability N/N	'N/A'/'N/A'	Site mostly inaudible, forklift occasionally audible. VPPS hum consistently audible. Birds nearby constant and wind in foliage almost constant. Local traffic (passbys) occasionally audible. Plane flying above.
ATN002	7/9	13:59 (Day)	38	40	45	46	56	64	57	Nil	<40	N/A	49	N/A	3.3 m/s @ 71° A class stability N/N	'N/A'/'N/A'	Site mostly inaudible, forklift occasionally audible. VPPS hum consistently audible. Birds nearby constant and wind in foliage almost constant. Local traffic (passbys) and traffic on Tall Timbers Road occasionally audible.
ATN002	7/9	14:14 (Day)	39	42	56	53	71	77	69	Nil	<42	N/A	49	N/A	4.6 m/s @ 72° A class stability N/N	'N/A'/'N/A'	Site mostly inaudible, forklift and 'banging' noise occasionally audible. VPPS hum consistently audible. Birds and wind in foliage constant. Local traffic (passbys) and traffic on Tall Timbers Road occasionally audible.
ATN002	7/9	14:29 (Day)	42	44	48	50	56	72	57	Nil	<44	N/A	49	N/A	3.8 m/s @ 72° A class stability N/N	'N/A'/'N/A'	Site mostly inaudible, forklift and 'banging' noise occasionally audible. VPPS hum consistently audible. Wind in foliage constant and birds almost constant. Local traffic (passbys) and traffic on Tall Timbers Road occasionally audible. Dog barking.
ATN002	7/9	14:45 (Day)	41	44	52	52	61	76	65	Nil	IA	N/A	49	N/A	3.4 m/s @ 67° A class stability N/N	'N/A'/'N/A'	Site inaudible. VPPS hum consistently audible. Birds and wind in foliage constant. Local traffic and passbys occasionally audible. Plane flying above.

Table 4.1 Chain Valley Colliery attended noise monitoring results – Q3 (September) 2020

Location	Date	Start time	Total noise levels, dB							Site contributions, dB			Noise limits, dB		Meteorological conditions ³ Limits apply? (DC/EPL) (Y/N)	Exceedance, dB (DC/EPL)	Comments
			L _{Amin}	L _{A90}	L _{Aeq}	L _{A10}	L _{A1}	L _{Amax}	L _{Ceq}	LFN mod. factor ¹	L _{Aeq}	L _{Amax} ²	L _{Aeq}	L _{Amax} ²			
ATN002	7/9	15:00 (Day)	42	44	47	49	52	65	58	Nil	IA	N/A	49	N/A	3.5 m/s @ 57° A class stability N/N	'N/A'/'N/A'	Site inaudible. VPPS hum consistently audible. Birds and wind in foliage constant. Local traffic and passbys occasionally audible. Distant dogs barking.
ATN002	7/9	20:35 (Eve.)	37	39	43	43	55	60	64	Nil	IA	N/A	49	N/A	1.4 m/s @ 34° F class stability N/Y	'N/A'/'Nil	Site inaudible. VPPS hum consistently audible. Insects consistently audible. Local traffic (passbys) and distant traffic occasionally audible. Wind in foliage occasionally audible.
ATN002	7/9	20:50 (Eve.)	37	39	41	42	45	58	64	Nil	IA	N/A	49	N/A	1.2 m/s @ 28° F class stability N/Y	'N/A'/'Nil	Site inaudible. VPPS hum consistently audible. Insects consistently audible. Distant traffic occasionally audible. Fauna in nearby woods occasionally audible.
ATN002	7/9	23:20 (Night)	38	40	42	44	46	56	66	Nil	<40	<40	49	54	1.5 m/s @ 9° F class stability N/Y	'N/A'/'Nil	Site mostly inaudible, forklift occasionally audible. VPPS hum consistently audible. Insects consistently audible.
ATN002	7/9	23:35 (Night)	38	40	42	43	46	54	66	Nil	IA	IA	49	54	1.4 m/s @ 2° F class stability N/Y	'N/A'/'Nil	Site inaudible. VPPS hum consistently audible. Insects consistently audible.
ATN002	7/9	23:50 (Night)	39	40	42	43	44	46	66	Nil	IA	IA	49	54	1.5 m/s @ 351° F class stability N/Y	'N/A'/'Nil	Site inaudible. VPPS hum consistently audible. Insects consistently audible.
ATN002	8/9	00:05 (Night)	38	40	41	42	44	50	66	Nil	<40	<40	49	54	0.9 m/s @ 324° F class stability N/Y	'N/A'/'Nil	Site mostly inaudible, winch briefly audible once. VPPS hum consistently audible. Insects consistently audible. Distant traffic on Tall Timbers Road audible once.
ATN003	7/9	12:07 (Day)	35	38	43	45	54	63	58	Nil	<34	N/A	36	N/A	3.3 m/s @ 56° A class stability N/N	'N/A'/'N/A'	Site mostly inaudible, forklift occasionally audible. VPPS hum consistently audible. Water sprinklers consistently audible. Residents nearby talking, birds nearby and wind in foliage frequently audible. Local traffic and traffic on Tall Timbers Road occasionally audible. Gardener talked to operator briefly.

Table 4.1 Chain Valley Colliery attended noise monitoring results – Q3 (September) 2020

Location	Date	Start time	Total noise levels, dB							Site contributions, dB			Noise limits, dB		Meteorological conditions ³ Limits apply? (DC/EPL) (Y/N)	Exceedance, dB (DC/EPL)	Comments
			L _{Amin}	L _{A90}	L _{Aeq}	L _{A10}	L _{A1}	L _{Amax}	L _{Ceq}	LFN mod. factor ¹	L _{Aeq}	L _{Amax} ²	L _{Aeq}	L _{Amax} ²			
ATN003	7/9	12:22 (Day)	36	38	48	47	61	74	58	Nil	<35	N/A	36	N/A	3.4 m/s @ 66° A class stability N/N	'N/A'/'N/A'	Site mostly inaudible, forklift occasionally audible. VPPS hum consistently audible. Water sprinklers consistently audible. Residents nearby talking, birds nearby and wind in foliage frequently audible. Local traffic and traffic on Tall Timbers Road occasionally audible. Gardener talked to operator briefly.
ATN003	7/9	12:38 (Day)	37	39	48	51	60	72	57	Nil	IA	N/A	36	N/A	3.1 m/s @ 79° A class stability N/N	'N/A'/'N/A'	Site inaudible. VPPS hum consistently audible. Water sprinklers consistently audible. Residents nearby talking, birds nearby and wind in foliage frequently audible. Local traffic and traffic on Tall Timbers Road occasionally audible. Gardener talked to operator briefly.
ATN003	7/9	12:53 (Day)	36	39	46	47	56	74	56	Nil	IA	N/A	36	N/A	3.6 m/s @ 79° A class stability N/N	'N/A'/'N/A'	Site inaudible. Water sprinklers consistently audible. Residents nearby talking on occasion. Birds nearby and wind in foliage very frequently audible. Distant traffic and traffic on Tall Timbers Road occasionally audible.
ATN003	7/9	13:08 (Day)	36	38	45	46	57	65	54	Nil	IA	N/A	36	N/A	3.2 m/s @ 82° A class stability N/N	'N/A'/'N/A'	Site inaudible. VPPS hum occasionally audible. Water sprinklers consistently audible. Residents nearby talking on occasion. Birds nearby and wind in foliage very frequently audible. Distant traffic and traffic on Tall Timbers Road occasionally audible.
ATN003	7/9	13:23 (Day)	37	39	44	46	53	64	54	Nil	<35	N/A	36	N/A	3.8 m/s @ 68° A class stability N/N	'N/A'/'N/A'	Site mostly inaudible, forklift occasionally audible. VPPS hum occasionally audible. Water sprinklers consistently audible. Residents nearby talking and cleaning on occasion. Birds nearby and wind in foliage very frequently audible. Distant traffic and traffic on Tall Timbers Road occasionally audible.
ATN003	8/9	20:30 (Eve.)	36	38	40	42	45	53	63	Nil	IA	N/A	36	N/A	0.9 m/s @ 10° E class stability Y/Y	Nil/Nil	Site inaudible. VPPS noise consistently audible (dominant). Insects and frogs consistently audible. Distant traffic and traffic on Tall Timbers Road occasionally audible. Dogs barking occasionally audible.
ATN003	8/9	20:45 (Eve.)	36	39	43	46	49	52	63	Nil	IA	N/A	36	N/A	1.4 m/s @ 11° E class stability Y/Y	Nil/Nil	Site inaudible. VPPS noise consistently audible (dominant). Insects and frogs consistently audible. Local traffic and traffic on Tall Timbers Road occasionally audible.

Table 4.1 Chain Valley Colliery attended noise monitoring results – Q3 (September) 2020

Location	Date	Start time	Total noise levels, dB							Site contributions, dB			Noise limits, dB		Meteorological conditions ³ Limits apply? (DC/EPL) (Y/N)	Exceedance, dB (DC/EPL)	Comments
			L _{Amin}	L _{A90}	L _{Aeq}	L _{A10}	L _{A1}	L _{Amax}	L _{Ceq}	LFN mod. factor ¹	L _{Aeq}	L _{Amax} ²	L _{Aeq}	L _{Amax} ²			
ATN003	8/9	22:30 (Night)	36	38	40	42	43	51	61	Nil	IA	IA	36	45	0.6 m/s @ 238° D class stability Y/Y	Nil/Nil	Site inaudible. VPPS noise consistently audible (dominant). Insects and frogs consistently audible.
ATN003	8/9	22:45 (Night)	36	39	41	42	44	47	61	Nil	IA	IA	36	45	0.9 m/s @ 218° E class stability Y/Y	Nil/Nil	Site inaudible. VPPS noise consistently audible (dominant). Insects and frogs consistently audible. Local traffic and traffic on Tall Timbers Road occasionally audible.
ATN003	8/9	23:00 (Night)	38	40	41	43	45	52	62	Nil	IA	IA	36	45	0.6 m/s @ 197° E class stability Y/Y	Nil/Nil	Site inaudible. VPPS noise consistently audible (dominant). Insects and frogs consistently audible. Traffic on Tall Timbers Road occasionally audible.
ATN003	8/9	23:15 (Night)	38	40	42	43	45	49	62	Nil	IA	IA	36	45	0.6 m/s @ 131° E class stability Y/Y	Nil/Nil	Site inaudible. Overland conveyor just audible. VPPS noise consistently audible (dominant). Insects and frogs consistently audible. Traffic on Tall Timbers Road occasionally audible.
ATN004	7/9	11:46 (Day)	38	41	51	50	63	78	58	Nil	IA	N/A	35	N/A	3.2 m/s @ 49° A class stability N/N	'N/A'/'N/A'	Site inaudible. Local and distant traffic frequently audible. Birds, wind in foliage, dogs barking and people talking nearby audible. Residents doing house work (mowing and cleaning) frequently audible.
ATN004	8/9	21:45 (Eve.)	35	38	40	42	43	53	58	Nil	IA	N/A	35	N/A	1.3 m/s @ 25° E class stability Y/Y	Nil/Nil	Site inaudible. VPPS noise consistently audible (dominant). Insects just audible. Distant traffic and traffic occasionally audible.
ATN004	8/9	22:00 (Night)	35	37	42	45	47	53	59	Nil	<35	<35	35	45	1 m/s @ 33° E class stability Y/Y	Nil/Nil	Site mostly inaudible, alarm briefly audible once. VPPS hum consistently audible.
ATN005	7/9	11:18 (Day)	33	36	41	42	51	64	57	Nil	IA	N/A	35	N/A	3.3 m/s @ 48° A class stability N/N	'N/A'/'N/A'	Site inaudible. VPPS noise consistently audible. Wind in foliage frequently audible. Bird noise, distant traffic, distant dogs barking and resident noise occasionally audible.
ATN005	8/9	20:47 (Eve.)	37	40	42	44	45	61	60	Nil	IA	N/A	35	N/A	1.3 m/s @ 16° E class stability N/Y	'N/A'/'Nil	Site inaudible. VPPS noise, insects and frogs consistently audible. Nearby animals and distant traffic occasionally audible.

Table 4.1 Chain Valley Colliery attended noise monitoring results – Q3 (September) 2020

Location	Date	Start time	Total noise levels, dB							Site contributions, dB			Noise limits, dB		Meteorological conditions ³ Limits apply? (DC/EPL) (Y/N)	Exceedance, dB (DC/EPL)	Comments
			L _{Amin}	L _{A90}	L _{Aeq}	L _{A10}	L _{A1}	L _{Amax}	L _{Ceq}	LFN mod. factor ¹	L _{Aeq}	L _{Amax} ²	L _{Aeq}	L _{Amax} ²			
ATN005	8/9	23:05 (Night)	40	42	44	46	50	61	61	Nil	IA	IA	35	45	0.7 m/s @ 211° E class stability Y/Y	Nil/Nil	Site inaudible. VPPS noise and insects consistently audible. Bird noise, nearby animals, distant and local traffic occasionally audible.
ATN006	7/9	11:39 (Day)	33	35	52	41	65	80	56	Nil	IA	N/A	37	N/A	3.1 m/s @ 56° A class stability N/N	'N/A'/'N/A'	Site inaudible. VPPS noise and nearby pump consistently audible. Bird noise, resident noise and wind in foliage frequently audible. Distant traffic, traffic passbys, distant dogs barking and resident noise occasionally audible.
ATN006	7/9	11:54 (Day)	32	35	43	46	52	63	62	Nil	IA	N/A	37	N/A	3.5 m/s @ 57° A class stability N/N	'N/A'/'N/A'	Site inaudible. VPPS noise and nearby pump consistently audible. Bird noise, resident noise and wind in foliage frequently audible. Distant traffic, traffic passbys, distant dogs barking and resident noise occasionally audible.
ATN006	7/9	12:09 (Day)	33	35	39	41	49	61	56	Nil	IA	N/A	37	N/A	3.3 m/s @ 44° A class stability N/N	'N/A'/'N/A'	Site inaudible. VPPS noise and nearby pump consistently audible. Bird noise, resident noise and wind in foliage frequently audible. Distant traffic, traffic passbys, distant dogs barking and resident noise occasionally audible.
ATN006	7/9	12:24 (Day)	34	36	41	44	48	61	57	Nil	IA	N/A	37	N/A	3.4 m/s @ 66° A class stability N/N	'N/A'/'N/A'	Site inaudible. VPPS noise and nearby pump consistently audible. Bird noise, resident noise and wind in foliage frequently audible. Distant traffic, traffic passbys, distant dogs barking and resident noise occasionally audible.
ATN006	7/9	12:39 (Day)	34	37	43	46	53	62	57	Nil	IA	N/A	37	N/A	3.1 m/s @ 79° A class stability N/N	'N/A'/'N/A'	Site inaudible. VPPS noise and nearby pump consistently audible. Bird noise, resident noise and wind in foliage frequently audible. Distant traffic, traffic passbys, distant dogs barking and resident noise occasionally audible.
ATN006	7/9	12:54 (Day)	36	38	46	47	56	72	63	Nil	IA	N/A	37	N/A	3.6 m/s @ 79° A class stability N/N	'N/A'/'N/A'	Site inaudible. VPPS noise and nearby pump consistently audible. Bird noise, resident noise and wind in foliage frequently audible. Distant traffic, traffic passbys, distant dogs barking and resident noise occasionally audible.
ATN006	8/9	21:08 (Eve.)	35	38	40	42	45	62	60	Nil	IA	N/A	37	N/A	1.2 m/s @ 35° F class stability N/Y	'N/A'/'Nil	Site inaudible. VPPS noise and insects consistently audible. Bird noise, nearby animals and distant and local traffic occasionally audible.

Table 4.1 Chain Valley Colliery attended noise monitoring results – Q3 (September) 2020

Location	Date	Start time	Total noise levels, dB							Site contributions, dB			Noise limits, dB		Meteorological conditions ³ Limits apply? (DC/EPL) (Y/N)	Exceedance, dB (DC/EPL)	Comments
			L _{Amin}	L _{A90}	L _{Aeq}	L _{A10}	L _{A1}	L _{Amax}	L _{Ceq}	LFN mod. factor ¹	L _{Aeq}	L _{Amax} ²	L _{Aeq}	L _{Amax} ²			
ATN006	8/9	21:23 (Eve.)	33	35	39	39	50	56	58	Nil	IA	N/A	37	N/A	1.6 m/s @ 23° D class stability Y/Y	Nil/Nil	Site inaudible. VPPS noise and insects consistently audible. Bird noise, nearby animals and distant and local traffic occasionally audible.
ATN006	8/9	22:00 (Night)	33	35	37	39	42	53	58	Nil	IA	IA	37	45	1 m/s @ 33° E class stability Y/Y	Nil/Nil	Site inaudible. VPPS noise, insects and nearby pump consistently audible. Distant dog barking, nearby animals and resident noise occasionally audible.
ATN006	8/9	22:15 (Night)	35	37	41	43	46	49	59	Nil	IA	IA	37	45	0.7 m/s @ 13° E class stability Y/Y	Nil/Nil	Site inaudible. VPPS noise, insects and nearby pump consistently audible. Distant dog barking, nearby animals and resident noise occasionally audible.
ATN006	8/9	22:30 (Night)	33	35	37	39	42	49	58	Nil	IA	IA	37	45	0.6 m/s @ 238° D class stability Y/Y	Nil/Nil	Site inaudible. VPPS noise, insects and nearby pump consistently audible. Distant dog barking, nearby animals and resident noise occasionally audible.
ATN006	8/9	22:45 (Night)	33	35	37	39	40	49	59	Nil	IA	IA	37	45	0.9 m/s @ 218° E class stability Y/Y	Nil/Nil	Site inaudible. VPPS noise, insects and nearby pump consistently audible. Distant dog barking, nearby animals and resident noise occasionally audible.
ATN007 ⁴	7/9	9:51 (Day)	44	45	46	47	50	58	67	Nil	36	N/A	46 ⁵	N/A	2.2 m/s @ 10° A class stability Y/Y	Nil/Nil	Site vent fan consistently audible and dominant. Birds consistently audible. Wind in foliage frequently audible. Distant traffic and plane flying above occasionally audible. Jackhammer audible at a distance (unrelated to CVC)
ATN007 ⁴	7/9	10:08 (Day)	44	45	47	48	52	58	67	Nil	36	N/A	46 ⁵	N/A	2.8 m/s @ 19° A class stability Y/Y	Nil/Nil	Site vent fan consistently audible and dominant. Birds consistently audible. Wind in foliage frequently audible. Distant traffic and plane flying above occasionally audible. Jackhammer audible at a distance (unrelated to CVC)
ATN007 ⁴	7/9	10:23 (Day)	44	45	47	48	52	60	67	Nil	36	N/A	46 ⁵	N/A	2.3 m/s @ 142° A class stability Y/Y	Nil/Nil	Site vent fan consistently audible and dominant. Birds consistently audible. Wind in foliage frequently audible. Distant traffic and plane flying above occasionally audible. Jackhammer audible at a distance (unrelated to CVC)

Table 4.1 Chain Valley Colliery attended noise monitoring results – Q3 (September) 2020

Location	Date	Start time	Total noise levels, dB							Site contributions, dB			Noise limits, dB		Meteorological conditions ³ Limits apply? (DC/EPL) (Y/N)	Exceedance, dB (DC/EPL)	Comments
			L _{Amin}	L _{A90}	L _{Aeq}	L _{A10}	L _{A1}	L _{Amax}	L _{Ceq}	LFN mod. factor ¹	L _{Aeq}	L _{Amax} ²	L _{Aeq}	L _{Amax} ²			
ATN007 ⁴	7/9	10:38 (Day)	44	45	47	48	50	55	67	Nil	36	N/A	46 ⁵	N/A	2.8 m/s @ 42° A class stability Y/Y	Nil/Nil	Site vent fan consistently audible and dominant. Birds consistently audible. Wind in foliage frequently audible. Distant traffic and plane flying above occasionally audible. Jackhammer audible at a distance (unrelated to CVC)
ATN007 ⁴	7/9	10:53 (Day)	44	45	48	51	56	64	67	Nil	36	N/A	46 ⁵	N/A	2.9 m/s @ 35° A class stability Y/Y	Nil/Nil	Site vent fan consistently audible and dominant. Birds consistently audible. Wind in foliage frequently audible. Distant traffic and plane flying above occasionally audible. Jackhammer audible at a distance (unrelated to CVC)
ATN007 ⁴	7/9	11:08 (Day)	44	45	47	49	53	60	67	Nil	36	N/A	46 ⁵	N/A	3.3 m/s @ 44° A class stability N/N	'N/A'/'N/A'	Site vent fan consistently audible and dominant. Birds consistently audible. Wind in foliage frequently audible. Distant traffic and plane flying above occasionally audible. Jackhammer audible at a distance (unrelated to CVC)
ATN007 ⁴	7/9	21:25 (Eve.)	44	45	46	46	47	54	67	2	38 (36+2)	N/A	46 ⁵	N/A	1.8 m/s @ 21° F class stability N/Y	'N/A'/'Nil	Site vent fan consistently audible and dominant. Insects consistently audible. Distant dog barking briefly audible. Distant traffic and wind in foliage occasionally audible.
ATN007 ⁴	7/9	21:40 (Eve.)	44	45	45	46	47	51	67	2	38 (36+2)	N/A	46 ⁵	N/A	1.7 m/s @ 24° F class stability N/Y	'N/A'/'Nil	Site vent fan consistently audible and dominant. Insects consistently audible. Distant dog barking briefly audible. Distant traffic and wind in foliage occasionally audible.
ATN007 ⁴	7/9	22:00 (Night)	44	45	45	46	46	53	67	2	38 (36+2)	37	46 ⁵	46	1.6 m/s @ 33° F class stability N/Y	'N/A'/'Nil	Site vent fan consistently audible and dominant. Insects consistently audible. Distant traffic occasionally audible.
ATN007 ⁴	7/9	22:15 (Night)	44	45	45	46	46	47	67	2	38 (36+2)	37	46 ⁵	46	2 m/s @ 25° F class stability N/Y	'N/A'/'Nil	Site vent fan consistently audible and dominant. Insects consistently audible. Distant traffic occasionally audible.
ATN007 ⁴	7/9	22:30 (Night)	44	45	45	46	47	50	67	2	38 (36+2)	37	46 ⁵	46	1.7 m/s @ 27° F class stability N/Y	'N/A'/'Nil	Site vent fan consistently audible and dominant. Insects consistently audible. Distant traffic occasionally audible.
ATN007 ⁴	7/9	22:45 (Night)	44	45	45	46	46	53	67	2	38 (36+2)	37	46 ⁵	46	2.2 m/s @ 20° F class stability N/N	'N/A'/'N/A'	Site vent fan consistently audible and dominant. Insects consistently audible. Distant traffic occasionally audible.

Table 4.1 Chain Valley Colliery attended noise monitoring results – Q3 (September) 2020

Location	Date	Start time	Total noise levels, dB							Site contributions, dB			Noise limits, dB		Meteorological conditions ³ Limits apply? (DC/EPL) (Y/N)	Exceedance, dB (DC/EPL)	Comments
			L _{Amin}	L _{A90}	L _{Aeq}	L _{A10}	L _{A1}	L _{Amax}	L _{Ceq}	LFN mod. factor ¹	L _{Aeq}	L _{Amax} ²	L _{Aeq}	L _{Amax} ²			
R12	7/9	13:44 (Day)	38	40	48	50	61	69	58	Nil	<40	N/A	49	N/A	3.3 m/s @ 71° A class stability N/N	'N/A'/'N/A'	Site mostly inaudible, forklift occasionally audible. VPPS hum consistently audible. Birds nearby constant and wind in foliage almost constant. Local traffic (passbys) occasionally audible. Plane flying above.
R12	7/9	13:59 (Day)	38	40	45	46	56	64	57	Nil	<40	N/A	49	N/A	3.3 m/s @ 71° A class stability N/N	'N/A'/'N/A'	Site mostly inaudible, forklift occasionally audible. VPPS hum consistently audible. Birds nearby constant and wind in foliage almost constant. Local traffic (passbys) and traffic on Tall Timbers Road occasionally audible.
R12	7/9	14:14 (Day)	39	42	56	53	71	77	69	Nil	<42	N/A	49	N/A	4.6 m/s @ 72° A class stability N/N	'N/A'/'N/A'	Site mostly inaudible, forklift and 'banging' noise occasionally audible. VPPS hum consistently audible. Birds and wind in foliage constant. Local traffic (passbys) and traffic on Tall Timbers Road occasionally audible.
R12	7/9	14:29 (Day)	42	44	48	50	56	72	57	Nil	<44	N/A	49	N/A	3.8 m/s @ 72° A class stability N/N	'N/A'/'N/A'	Site mostly inaudible, forklift and 'banging' noise occasionally audible. VPPS hum consistently audible. Wind in foliage constant and birds almost constant. Local traffic (passbys) and traffic on Tall Timbers Road occasionally audible. Dog barking.
R12	7/9	14:45 (Day)	41	44	52	52	61	76	65	Nil	IA	N/A	49	N/A	3.4 m/s @ 67° A class stability N/N	'N/A'/'N/A'	Site inaudible. VPPS hum consistently audible. Birds and wind in foliage constant. Local traffic and passbys occasionally audible. Plane flying above.
R12	7/9	15:00 (Day)	42	44	47	49	52	65	58	Nil	IA	N/A	49	N/A	3.5 m/s @ 57° A class stability N/N	'N/A'/'N/A'	Site inaudible. VPPS hum consistently audible. Birds and wind in foliage constant. Local traffic and passbys occasionally audible. Distant dogs barking.
R12	7/9	20:35 (Eve.)	37	39	43	43	55	60	64	Nil	IA	N/A	49	N/A	1.4 m/s @ 34° F class stability N/Y	'N/A'/'Nil	Site inaudible. VPPS hum consistently audible. Insects consistently audible. Local traffic (passbys) and distant traffic occasionally audible. Wind in foliage occasionally audible.
R12	7/9	20:50 (Eve.)	37	39	41	42	45	58	64	Nil	IA	N/A	49	N/A	1.2 m/s @ 28° F class stability N/Y	'N/A'/'Nil	Site inaudible. VPPS hum consistently audible. Insects consistently audible. Distant traffic occasionally audible. Fauna in nearby woods occasionally audible.

Table 4.1 Chain Valley Colliery attended noise monitoring results – Q3 (September) 2020

Location	Date	Start time	Total noise levels, dB							Site contributions, dB			Noise limits, dB		Meteorological conditions ³ Limits apply? (DC/EPL) (Y/N)	Exceedance, dB (DC/EPL)	Comments
			L _{Amin}	L _{A90}	L _{Aeq}	L _{A10}	L _{A1}	L _{Amax}	L _{Ceq}	LFN mod. factor ¹	L _{Aeq}	L _{Amax} ²	L _{Aeq}	L _{Amax} ²			
R12	7/9	23:20 (Night)	38	40	42	44	46	56	66	Nil	<40	<40	49	53	1.5 m/s @ 9° F class stability N/Y	'N/A'/Nil	Site mostly inaudible, forklift occasionally audible. VPPS hum consistently audible. Insects consistently audible.
R12	7/9	23:35 (Night)	38	40	42	43	46	54	66	Nil	IA	IA	49	53	1.4 m/s @ 2° F class stability N/Y	'N/A'/Nil	Site inaudible. VPPS hum consistently audible. Insects consistently audible.
R12	7/9	23:50 (Night)	39	40	42	43	44	46	66	Nil	IA	IA	49	53	1.5 m/s @ 351° F class stability N/Y	'N/A'/Nil	Site inaudible. VPPS hum consistently audible. Insects consistently audible.
R12	8/9	00:05 (Night)	38	40	41	42	44	50	66	Nil	<40	<40	49	53	0.9 m/s @ 324° F class stability N/Y	'N/A'/Nil	Site mostly inaudible, winch briefly audible once. VPPS hum consistently audible. Insects consistently audible. Distant traffic on Tall Timbers Road audible once.
R13	7/9	13:26 (Day)	36	38	57	44	73	79	68	Nil	IA	N/A	43	N/A	3.8 m/s @ 68° A class stability N/N	'N/A'/'N/A'	Site inaudible. VPPS noise consistently audible. Bird noise, resident noise, wind in foliage, distant traffic and traffic passbys frequently audible. Aircraft noise and dogs barking occasionally audible.
R13	7/9	13:41 (Day)	36	40	48	50	59	73	56	Nil	IA	N/A	43	N/A	3.9 m/s @ 71° A class stability N/N	'N/A'/'N/A'	Site inaudible. VPPS noise consistently audible. Bird noise, resident noise, wind in foliage, distant traffic and traffic passbys frequently audible. Aircraft noise and dogs barking occasionally audible.
R13	7/9	13:56 (Day)	37	40	46	47	54	71	56	Nil	IA	N/A	43	N/A	3.7 m/s @ 75° A class stability N/N	'N/A'/'N/A'	Site inaudible. VPPS noise consistently audible. Bird noise, resident noise, wind in foliage, distant traffic and traffic passbys frequently audible. Aircraft noise and dogs barking occasionally audible.
R13	7/9	14:11 (Day)	37	40	49	51	61	68	59	Nil	IA	N/A	43	N/A	4 m/s @ 67° A class stability N/N	'N/A'/'N/A'	Site inaudible. VPPS noise consistently audible. Bird noise, resident noise, wind in foliage, distant traffic and traffic passbys frequently audible. Aircraft noise and dogs barking occasionally audible.

Table 4.1 Chain Valley Colliery attended noise monitoring results – Q3 (September) 2020

Location	Date	Start time	Total noise levels, dB							Site contributions, dB			Noise limits, dB		Meteorological conditions ³ Limits apply? (DC/EPL) (Y/N)	Exceedance, dB (DC/EPL)	Comments
			L _{Amin}	L _{A90}	L _{Aeq}	L _{A10}	L _{A1}	L _{Amax}	L _{Ceq}	LFN mod. factor ¹	L _{Aeq}	L _{Amax} ²	L _{Aeq}	L _{Amax} ²			
R13	7/9	14:26 (Day)	39	41	46	48	56	72	60	Nil	IA	N/A	43	N/A	4.1 m/s @ 74° A class stability N/N	'N/A'/'N/A'	Site inaudible. VPPS noise consistently audible. Bird noise, resident noise, wind in foliage, distant traffic and traffic passbys frequently audible. Aircraft noise and dogs barking occasionally audible.
R13	7/9	14:41 (Day)	41	44	45	47	49	57	55	Nil	IA	N/A	43	N/A	3.6 m/s @ 67° A class stability N/N	'N/A'/'N/A'	Site inaudible. VPPS noise consistently audible. Bird noise, resident noise, wind in foliage, distant traffic and traffic passbys frequently audible. Aircraft noise and dogs barking occasionally audible.
R13	7/9	21:18 (Eve.)	36	38	40	41	43	49	58	Nil	IA	N/A	43	N/A	1.4 m/s @ 18° F class stability N/Y	'N/A'/'Nil	Site inaudible. VPPS noise and wind in foliage consistently audible. Distant traffic and distant dogs barking occasionally audible.
R13	7/9	21:33 (Eve.)	37	38	40	41	43	46	58	Nil	IA	N/A	43	N/A	2 m/s @ 27° F class stability N/Y	'N/A'/'Nil	Site inaudible. VPPS noise and wind in foliage consistently audible. Distant traffic and distant dogs barking occasionally audible.
R13	7/9	22:00 (Night)	36	38	40	41	43	47	59	Nil	IA	IA	43	49	1.6 m/s @ 33° F class stability N/Y	'N/A'/'Nil	Site inaudible. VPPS noise, insects and wind in foliage consistently audible. Bird noise, resident noise and distant traffic occasionally audible.
R13	7/9	22:00 (Night)	37	38	40	41	44	52	59	Nil	IA	IA	43	49	2 m/s @ 25° F class stability N/Y	'N/A'/'Nil	Site inaudible. VPPS noise, insects and wind in foliage consistently audible. Bird noise, resident noise and distant traffic occasionally audible.
R13	7/9	22:00 (Night)	36	38	40	42	44	47	59	Nil	IA	IA	43	49	1.7 m/s @ 27° F class stability N/Y	'N/A'/'Nil	Site inaudible. VPPS noise, insects and wind in foliage consistently audible. Bird noise, resident noise and distant traffic occasionally audible.

Table 4.1 Chain Valley Colliery attended noise monitoring results – Q3 (September) 2020

Location	Date	Start time	Total noise levels, dB							Site contributions, dB			Noise limits, dB		Meteorological conditions ³ Limits apply? (DC/EPL) (Y/N)	Exceedance, dB (DC/EPL)	Comments
			L _{Amin}	L _{A90}	L _{Aeq}	L _{A10}	L _{A1}	L _{Amax}	L _{Ceq}	LFN mod. factor ¹	L _{Aeq}	L _{Amax} ²	L _{Aeq}	L _{Amax} ²			
R13	7/9	22:00 (Night)	35	38	40	42	45	47	59	Nil	IA	IA	43	49	2.2 m/s @ 20° F class stability N/N	'N/A'/'N/A'	Site inaudible. VPPS noise, insects and wind in foliage consistently audible. Bird noise, resident noise and distant traffic occasionally audible.

- Notes:
1. Modifying factor adjustment for low frequency noise in accordance with Fact sheet C of the NPfl (refer to Section 2.2).
 2. For assessment purposes the L_{Amax} and the L_{A1,1 minute} are interchangeable.
 3. Meteorological data were taken as an average over 15 minutes from Mannering Colliery's weather station (Refer to Section 5.1).
 4. Due to access issues, noise monitoring for ATN007 was conducted at an intermediate location. Total noise levels shown were measured at the alternative location and site contributions were calculated back to ATN007 (R22/EPL Point 23).
 5. For the purposes of this assessment, the noise limits specified in Development Consent SSD-5465 have been used for assessing compliance at monitoring location ATN007 (R22/EPL Point 23).
 6. IA = inaudible, N/A = not applicable.

5 Conclusion

EMM has completed a review of mine noise from Chain Valley Colliery within the surrounding community based on attended measurements conducted on 7 and 8 September 2020.

The applicability of noise limits was assessed with reference to Mannering Colliery's meteorological station located to the south of the site. In accordance with the DC, noise limits were not applicable for 65 of the 90 measurements due to the presence of temperature inversion conditions greater than 3°C/100 m or wind speeds greater than 3 m/s during the relevant measurements. In accordance with the EPL, noise limits were not applicable for 36 of the 90 measurements due to the presence of stability category F temperature inversion conditions and wind speeds greater than 2 m/s or wind speeds greater than 3 m/s during the relevant measurements.

The assessment of noise contributions from site included consideration of modifying factors for annoying noise characteristics, where relevant, and in accordance with the INP and NPfI. A modifying factor for LFN was applicable at ATN007 during the evening and night-time measurements. Therefore, in accordance with the NPfI, a 2 dB positive adjustment was applied to the estimated site $L_{Aeq,15 \text{ minute}}$ noise contribution for these measurements before comparison to the relevant noise limits.

Chain Valley Colliery noise contributions for this round (Q4) of noise monitoring were below (satisfied) the relevant noise limits at all monitoring locations as outlined in the DC, NMP and EPL, where applicable. A technical non-compliance was recorded at ATN007 with respect to the EPL noise limits.

References

Chain Valley Colliery Noise Management Plan, 2014.

NSW Department of Planning and Environment, Development Consent SSD5465, 2020.

NSW Environment Protection Authority, Environment Protection License 1770, 2019.

NSW Environment Protection Authority, Industrial Noise Policy, 2000.

NSW Environment Protection Authority, Industrial Noise Policy Application notes, 2017.

NSW Environment Protection Authority, Noise Policy for Industry, 2017.

Appendix A

Glossary of acoustic terms

Several technical terms are discussed in this report. These are explained in Table A.1.

Table A.1 **Glossary of acoustic terms**

Term	Description
dB	Noise is measured in the unit called the decibel (dB). There are several scales for describing noise, the most common being the 'A-weighted' scale. This attempts to closely approximate the frequency response of the human ear.
L _{A1}	The 'A-weighted' noise level which is exceeded 1% of the time.
L _{A1,1 minute}	The 'A-weighted' noise level exceeded for 1% of the specified time period of 1 minute.
L _{A10}	The 'A-weighted' noise level which is exceeded 10% of the time. It is approximately equivalent to the average of maximum noise level.
L _{A90}	Commonly referred to as the background noise level. The 'A-weighted' noise level exceeded 90% of the time.
L _{Aeq}	The energy average noise from a source. This is the equivalent continuous 'A-weighted' sound pressure level over a given period. The L _{Aeq,15 minute} descriptor refers to an L _{Aeq} noise level measured over a 15-minute period.
L _{Amin}	The minimum 'A-weighted' noise level received during a measuring interval.
L _{Amax}	The maximum root mean squared 'A-weighted' sound pressure level (or maximum noise level) received during a measuring interval.
L _{Ceq}	The equivalent continuous 'C-weighted' sound pressure level over a given period. The L _{Ceq,15 minute} descriptor refers to an L _{Ceq} noise level measured over a 15 minute period. C-weighting can be used to measure low frequency noise.
Day period	Monday – Saturday: 7 am to 6 pm, on Sundays and Public Holidays: 8 am to 6 pm.
Evening period	Monday – Saturday: 6 pm to 10 pm, on Sundays and Public Holidays: 6 pm to 10 pm.
Night period	Monday – Saturday: 10 pm to 7 am, on Sundays and Public Holidays: 10 pm to 8 am.
Temperature inversion	A meteorological condition where the atmospheric temperature increases with altitude.

It is useful to have an appreciation of the decibel (dB), the unit of noise measurement. Table A.2 gives an indication as to what an average person perceives about changes in noise levels.

Table A.2 **Perceived change in noise**

Change in sound pressure level (dB)	Perceived change in noise in surrounding environment
up to 2	not perceptible
3	just perceptible
5	noticeable difference
10	twice (or half) as loud
15	large change
20	four times (or quarter) as loud

Examples of common noise levels are provided in Figure A.1.

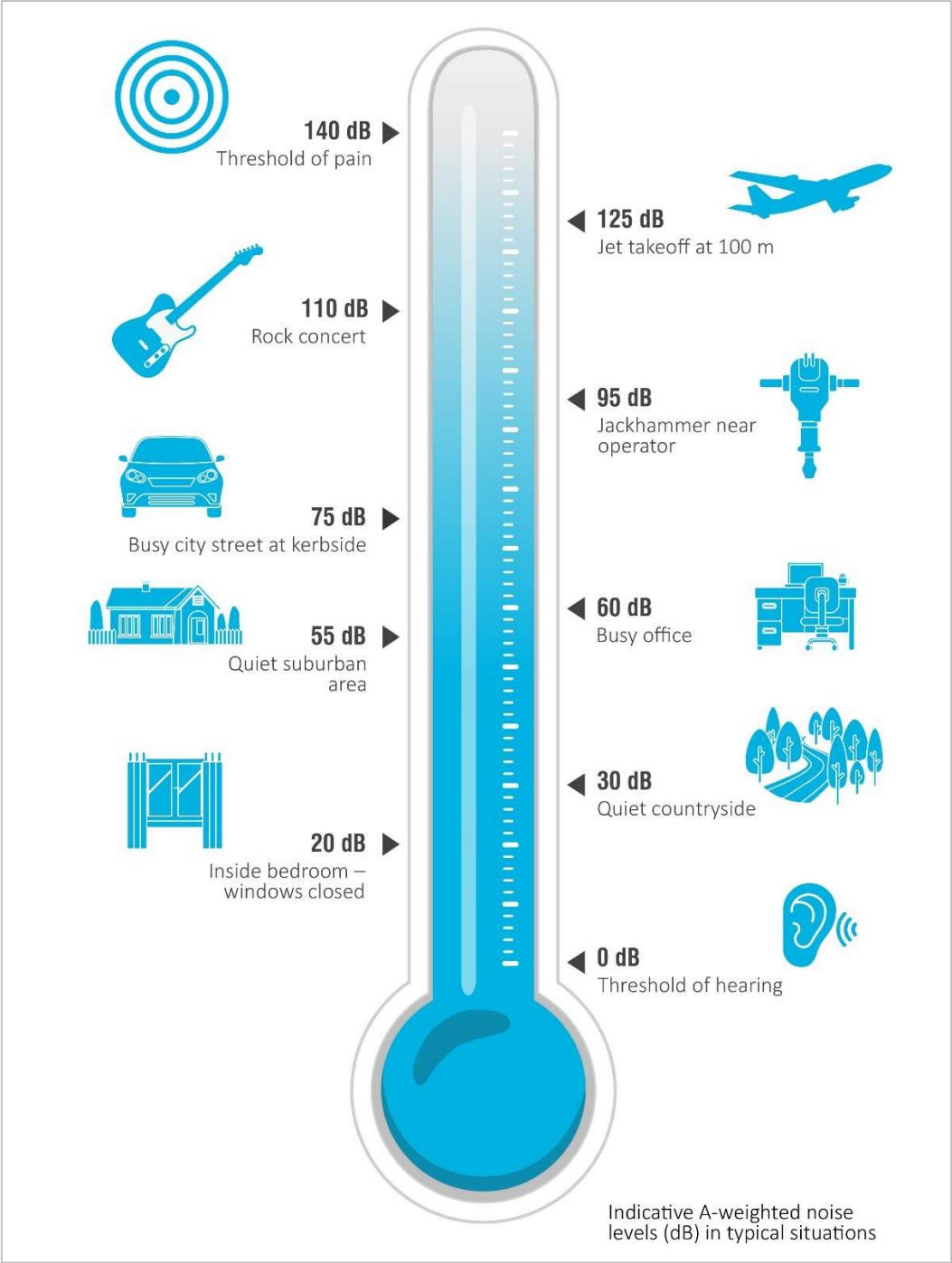


Figure A.1 Common noise levels

Appendix B

Development consent extract

must commission a suitably qualified person, whose appointment has been approved by the Planning Secretary at least one month prior to undertaking the audit, to conduct an Independent Traffic Audit of the development. This audit must:

- (a) be undertaken without prior notice to the Applicant, and in consultation with TfNSW, NCC, CC Council and the CCC;
- (b) assess the impact of the development on the performance and safety of the road network, including a review of:
 - haulage records;
 - accident records on the haulage route, infringements relating to the code of conduct and any incidents involving haulage vehicles;
 - community complaints register; and
- (c) assess the effectiveness of the Road Transport Protocol; and, if necessary, recommend measures to reduce or mitigate any adverse (or potentially adverse) impacts.

5. Within 1 month of receiving the audit report, or as otherwise agreed by the Planning Secretary, the Applicant must submit a copy of the report to the Planning Secretary, with a detailed response to any of the recommendations contained in the audit report, including a timetable for the implementation of any measures proposed to address the recommendations in the audit report.

A summary of the audit report must be included in the Annual Review.

Alternative Coal Transport Options

6. Prior to 31 December 2014, and every three years thereafter, the Applicant must prepare and submit to the Planning Secretary for approval, a study of the reasonable and feasible options to reduce or eliminate the use of public roads to transport coal from the development, unless otherwise agreed by the Planning Secretary. The assessment must include:
 - (a) an analysis of the capital, construction and operating costs of the alternative transport options; and
 - (b) quantified social and environmental impacts associated with road and rail transport.

NOISE

Noise Impact Assessment Criteria

7. The Applicant must ensure that the noise generated by the development at any residence on privately-owned land does not exceed the criteria for the location in Table 1 nearest to that residence.

Table 1: Noise Criteria dB(A)

Location	Day	Evening	Night	
	L _{Aeq} (15 min)	L _{Aeq} (15 min)	L _{Aeq} (15 min)	L _{A1} (1 min)
R8	38	38	38	45
R11	49	49	49	54
R12	49	49	49	53
R13	43	43	43	49
R15	36	36	36	45
R19	37	37	37	45
R22	46	46	46	46
all other privately-owned land	35	35	35	45

Notes:

- To interpret the locations referred to in Table 1, see Appendix 6 and the EIS; and
- Noise generated by the development is to be measured in accordance with the relevant requirements, and exemptions (including certain meteorological conditions), of the NSW Industrial Noise Policy. Appendix 8 sets out the meteorological conditions under which these criteria apply, and the requirements for evaluating compliance with these criteria.

However, these criteria do not apply if the Applicant has a written agreement with the relevant landowner to exceed the noise criteria, and the Applicant has advised the Department in writing of the terms of this agreement.

Operating Conditions

8. The Applicant **must**:
- implement best management practice, including all reasonable and feasible noise mitigation measures, to minimise the construction, operational and transport noise generated by the development;
 - regularly assess the noise monitoring and meteorological data and relocate, modify, and/or stop operations on site to ensure compliance with the relevant conditions of this consent;
 - minimise the noise impacts of the development during meteorological conditions under which the noise limits in this consent do not apply (see Appendix 8);
 - use its best endeavours to achieve the long-term noise goals in Table 2, where reasonable and feasible, and report on progress towards achieving these goals in each Annual Review;
 - carry out a comprehensive noise audit of the development in conjunction with each independent environmental audit; and
 - prepare an action plan to implement any additional reasonable and feasible onsite noise mitigation measures identified by each audit;
- to the satisfaction of the **Planning Secretary**.

Table 2: Long-term Noise Goals dB(A)

Location	Day	Evening	Night
	L _{Aeq} (15 min)	L _{Aeq} (15 min)	L _{Aeq} (15 min)
R11 – R13	41	41	41
R22	40	40	40

Notes:

- To interpret the locations referred to in Table 2, see Appendix 6 and the EIS; and
- Noise generated by the development is to be measured in accordance with the relevant requirements, and exemptions (including certain meteorological conditions), of the NSW Industrial Noise Policy. Appendix 8 sets out the meteorological conditions under which these criteria apply, and the requirements for evaluating compliance with these criteria.

Noise Management Plan

9. The Applicant **must** prepare a Noise Management Plan for the development to the satisfaction of the **Planning Secretary**. This plan must:
- be prepared in consultation with the EPA and submitted to the **Planning Secretary** for approval within 4 months of the date of this consent, unless otherwise agreed by the **Planning Secretary**;
 - describe the measures that would be implemented to ensure compliance with the noise criteria and operating conditions in this consent;
 - describe the proposed noise management system in detail including the mitigation measures that would be implemented to minimise noise during construction and operations, including on and off site road noise generated by vehicles associated with the development; and
 - include a monitoring program that:
 - uses attended monitoring to evaluate the compliance of the development against the noise criteria in this consent;
 - evaluates and reports on:
 - the effectiveness of the on-site noise management system; and
 - compliance against the noise operating conditions; and
 - defines what constitutes a noise incident, and includes a protocol for identifying and notifying the Department and relevant stakeholders of any noise incidents.

The Applicant must implement the Noise Management Plan as approved by the Planning Secretary.

AIR QUALITY

Odour

10. The Applicant **must** ensure that no offensive odours are emitted from the site, as defined under the POEO Act.

APPENDIX 8 NOISE COMPLIANCE ASSESSMENT

Applicable Meteorological Conditions

1. The noise criteria in Table 1 of the conditions are to apply under all meteorological conditions except the following:
 - (a) during periods of rain or hail;
 - (b) average wind speed at microphone height exceeds 5 m/s;
 - (c) wind speeds greater than 3 m/s measured at 10 m above ground level; or
 - (d) temperature inversion conditions greater than 3°C/100 m.

Determination of Meteorological Conditions

2. Except for wind speed at microphone height, the data to be used for determining meteorological conditions **must** be that recorded by the meteorological station described in **condition 14** of schedule 3.

Compliance Monitoring

3. Attended monitoring is to be used to evaluate compliance with the relevant conditions of this consent.
4. This monitoring must be carried out at least 4 times in each calendar year (ie at least once every 3 months), unless the **Planning Secretary** directs otherwise.
5. Unless otherwise agreed with the **Planning Secretary**, this monitoring is to be carried out in accordance with the relevant requirements for reviewing performance set out in the *NSW Industrial Noise Policy* (as amended from time to time), in particular the requirements relating to:
 - (a) monitoring locations for the collection of representative noise data;
 - (b) meteorological conditions during which collection of noise data is not appropriate;
 - (c) equipment used to collect noise data, and conformity with Australian Standards relevant to such equipment; and
 - (d) modifications to noise data collected, including for the exclusion of extraneous noise and/or penalties for modifying factors apart from adjustments for duration.

Appendix C

EPL extract

Environment Protection Licence

Licence - 1770



L4 Waste

L4.1 The licensee must not cause, permit or allow any waste to be received at the premises, except the wastes expressly referred to in the column titled "Waste" and meeting the definition, if any, in the column titled "Description" in the table below.

Any waste received at the premises must only be used for the activities referred to in relation to that waste in the column titled "Activity" in the table below.

Any waste received at the premises is subject to those limits or conditions, if any, referred to in relation to that waste contained in the column titled "Other Limits" in the table below.

This condition does not limit any other conditions in this licence.

Code	Waste	Description	Activity	Other Limits
NA	Waste	Any other waste received on the premises for storage, treatment, processing, sorting or disposal and which receipt is not a scheduled activity under Schedule 1 of the POEO Act, as in force from time to time.	-	
NA	General or Specific exempted waste	Waste that meets all the conditions of a resource exemption under Clause 92 of the Protection of the Environment Operations (Waste) Regulation 2014.	As specified in each particular resource recovery exemption	NA

L5 Noise limits

L5.1 Noise generated at the premises that is measured at each noise monitoring point established under this licence must not exceed the noise levels specified in Column 4 of the table below for that point during the corresponding time periods specified in Column 1 when measured using the corresponding measurement parameters listed in Column 2.

POINT 12

Time period	Measurement parameter	Measurement frequency	Noise level dB(A)
Day	Day-LAeq (15 minute)	-	49
Evening	Evening-LAeq (15 minute)	-	49
Night	Night-LAeq (15 minute)	-	49
Night	Night-LA1 (1 minute)	-	54

Environment Protection Licence

Licence - 1770



POINT 13

Time period	Measurement parameter	Measurement frequency	Noise level dB(A)
Day	Day-LAeq (15 minute)	-	49
Evening	Evening-LAeq (15 minute)	-	49
Night	Night-LAeq (15 minute)	-	49
Night	Night-LA1 (1 minute)	-	53

POINT 14

Time period	Measurement parameter	Measurement frequency	Noise level dB(A)
Day	Day-LAeq (15 minute)	-	43
Evening	Evening-LAeq (15 minute)	-	43
Night	Night-LAeq (15 minute)	-	43
Night	Night-LA1 (1 minute)	-	49

POINT 16

Time period	Measurement parameter	Measurement frequency	Noise level dB(A)
Day	Day-LAeq (15 minute)	-	36
Evening	Evening-LAeq (15 minute)	-	36
Night	Night-LAeq (15 minute)	-	36
Night	Night-LA1 (1 minute)	-	45

POINT 20

Time period	Measurement parameter	Measurement frequency	Noise level dB(A)
Day	Day-LAeq (15 minute)	-	37
Evening	Evening-LAeq (15 minute)	-	37
Night	Night-LAeq (15 minute)	-	37
Night	Night-LA1 (1 minute)	-	45

Environment Protection Licence

Licence - 1770



POINT 23

Time period	Measurement parameter	Measurement frequency	Noise level dB(A)
Day	Day-LAeq (15 minute)	-	46
Evening	Evening-LAeq (15 minute)	-	46
Night	Night-LAeq (15 minute)	-	36
Night	Night-LA1 (1 minute)	-	45

POINT 9

Time period	Measurement parameter	Measurement frequency	Noise level dB(A)
Day	Day-LAeq (15 minute)	-	38
Evening	Evening-LAeq (15 minute)	-	38
Night	Night-LAeq (15 minute)	-	38
Night	Night-LA1 (1 minute)	-	45

L5.2 The licensee must ensure that noise generated on the premises does not exceed:

- a) 35 LAeq(15min) during the day, evening or night at any privately owned land nearest to the residence apart from those receivers identified in Condition 5.1; and
- b) 45 LA1(1min) during the night at any privately owned land nearest to the residence apart from those receivers identified in Condition 5.1.

Note: The licensee may provide to the EPA written evidence of any agreement with a landholder which is subject to the above noise limits. The written evidence may be submitted with a licence variation to remove the landholder from the above tables.

L5.3 For the purpose of condition L5.1 and condition L5.2:

- (a) Day is defined as the period from 7am to 6pm Monday to Saturday and 8am to 6pm Sunday and public holidays;
- (b) Evening is defined as the period 6pm to 10pm, and
- (c) Night is defined as the period from 10pm to 7am Monday to Saturday and 10pm to 8am Sunday and public holidays.

L5.4 The noise limits set out in condition L5.1 and condition L5.2 apply under all meteorological conditions except for any one of the following:

- (a) Wind speeds greater than 3 metres/second at 10 metres above ground level; or
- (b) Stability category F temperature inversion conditions and wind speeds greater than 2 metres/second at 10 metres above ground level; or
- (c) Stability category G temperature inversion conditions.

Environment Protection Licence

Licence - 1770



L5.5 For the purpose of condition L5.4:

(a) the meteorological data to be used for determining meteorological conditions is the data recorded at the meteorological station identified in this licence as EPA Identification Point 26.

(b) Stability category temperature inversion conditions are to be determined by the sigma-theta method referred to in Part E4 of Appendix E to the *NSW industrial Noise Policy* (EPA 2000)

Note: The weather station must be designed, commissioned and operated in a manner to obtain the necessary parameters required under the above condition.

L5.6 For the purpose of determining the noise generated at the premises the licensee must use a Class 1 or Class 2 noise monitoring device as defined by AS IEC61672.1 and AS IEC61672.2-2004, or other noise monitoring equipment accepted by the EPA in writing.

L5.7 To determine compliance:

1. With the $L_{Aeq(15\text{ min})}$ noise limits in condition L5.1 and condition L5.2, the licensee must locate noise monitoring equipment;

(a) within 30 metres of a dwelling facade (but not closer than 3 metres) where any dwelling on the property is situated more than 30 metres from the property boundary that is closest to the premises;

(b) approximately on the boundary where any dwelling is situated 30 metres or less from the property boundary that is closest to the premises, or, where applicable,

(c) within approximately 50 metres if the boundary of a national park or nature reserve.

2. With the $LA1(1\text{ minute})$ noise limits in condition L5.1 and L5.2, the noise monitoring equipment must be located within 1 metre of a dwelling facade.

3. With the noise limits in condition L5.1 and condition L5.2, the noise monitoring equipment must be located;

(a) at the most affected point at a location where there is no dwelling at the location, or

(b) at the most affected point within an area at a location prescribed by conditions L5.7 1(a) or L5.7 1(b).

L5.8 A non-compliance of condition L5.1 or condition L5.2 will still occur where noise generated from the premises in excess of the appropriate limit is measured;

a) at a location other than an area prescribed by conditions L5.7 1(a) and L5.7 1(b), and /or

b) at a point other than the most affected point at a location.

L5.9 For the purposes of determining the noise generated at the premises the modification factors in Section 4 of the NSW Industrial Noise Policy must be applied, as appropriate, to the noise levels measured by the noise monitoring equipment.

4 Operating Conditions

Appendix D

Calibration certificates

CERTIFICATE OF CALIBRATION

CERTIFICATE NO.: SLM 26291 & FILT 5615

Equipment Description: Sound Level Meter

Manufacturer: B & K

Model No: 2250 **Serial No:** 2759405

Microphone Type: 4189 **Serial No:** 2888134

Preamplifier Type: ZC0032 **Serial No:** 16037

Filter Type: 1/3 Octave **Serial No:** 2759405

Comments: All tests passed for class 1.
(See over for details)

Owner: EMM Consulting
Level 3, 175 Scott Street
Newcastle, NSW 2300

Ambient Pressure: 1007 hPa ± 1.5 hPa

Temperature: 24 °C $\pm 2^\circ$ C **Relative Humidity:** 53% $\pm 5\%$

Date of Calibration: 05/02/2020 **Issue Date:** 05/02/2020

Acu-Vib Test Procedure: AVP10 (SLM) & AVP06 (Filters)

CHECKED BY: JKB

AUTHORISED SIGNATURE:

Jack Kiehl

Accredited for compliance with ISO/IEC 17025 - Calibration

The results of the tests, calibration and/or measurements included in this document are traceable to Australian/national standards.



ACU-VIB

ELECTRONICS

HEAD OFFICE

Unit 14, 22 Hudson Ave. Castle Hill NSW 2154

Tel: (02) 96808133 Fax: (02) 96808233

Mobile: 0413 809806

web site: www.acu-vib.com.au

Accredited Lab. No. 9262
Acoustic and Vibration
Measurements

Page 1 of 2
AVCERT10 Rev. 1.3 15.05.18

CERTIFICATE OF CALIBRATION

No: CDK1902917

Page 1 of 12

CALIBRATION OF

Sound Level Meter:	Brüel & Kjær Type 2270	No: 3027603	Id: -
Microphone:	Brüel & Kjær Type 4189	No: 3195772	
Preamplifier:	Brüel & Kjær Type ZC-0032	No: 28589	
Supplied Calibrator:	None		
Software version:	BZ7222 Version 4.7.5	Pattern Approval:	PTB1.63-4093056 / 1.63-4093058
Instruction manual:	BE1712-22		

CUSTOMER

EMM Consulting
Suite 1, Level 10, 87 Wickham Terrace
4000 Spring Hill
Queensland, Australia

CALIBRATION CONDITIONS

Preconditioning: 4 hours at 23°C ± 3°C
Environment conditions: See actual values in *Environmental conditions* sections.

SPECIFICATIONS

The Sound Level Meter Brüel & Kjær Type 2270 has been calibrated in accordance with the requirements as specified in IEC 61672-1:2013 class 1. Procedures from IEC 61672-3:2013 were used to perform the periodic tests. The accreditation assures the traceability to the international units system SI.

PROCEDURE

The measurements have been performed with the assistance of Brüel & Kjær Sound Level Meter Calibration System 3630 with application software type 7763 (version 8.0 - DB: 7.30) by using procedure B&K proc 2270, 4189 (IEC 61672:2013).


RESULTS

Calibration Mode: **Calibration as received.**

The reported expanded uncertainty is based on the standard uncertainty multiplied by a coverage factor $k = 2$ providing a level of confidence of approximately 95 %. The uncertainty evaluation has been carried out in accordance with EA-4/02 from elements originating from the standards, calibration method, effect of environmental conditions and any short time contribution from the device under calibration.

Date of calibration: 2019-04-12

Date of issue: 2019-04-12


Susanne Jørgensen
Calibration Technician


Mikail Önder
Approved Signatory

CERTIFICATE OF CALIBRATION

CERTIFICATE No: 26290

EQUIPMENT TESTED: Sound Level Calibrator

Manufacturer: B & K

Type No: 4230

Serial No: 1276091

Owner: EMM Consulting
Level 3, 175 Scott Street
Newcastle, NSW 2300

Tests Performed: Measured output pressure level was found to be:

Parameter	Pre-Adj	Adj Y/N	Output: (db re 20 μ Pa)	Frequency: (Hz)	THD&N (%)
Level 1:	NA	N	93.84	990.59	2.82
Level 2:	NA	N	NA	NA	NA
Uncertainty:			± 0.11 dB	$\pm 0.05\%$	$\pm 0.20\%$
Uncertainty (at 95% c.i.) k=2					

CONDITION OF TEST:

Ambient Pressure: 1007 hPa ± 1.5 hPa **Relative Humidity:** 49% $\pm 5\%$

Temperature: 24 $^{\circ}\text{C} \pm 2^{\circ}\text{C}$

Date of Calibration: 05/02/2020

Issue Date: 05/02/2020

Acu-Vib Test Procedure: AVP02 (Calibrators)

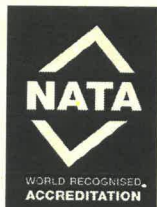
Test Method: AS IEC 60942 - 2017

CHECKED BY: *AKB* **AUTHORISED SIGNATURE:** *Jack Rielt*

Accredited for compliance with ISO/IEC 17025 - Calibration

The results of the tests, calibration and/or measurements included in this document are traceable to Australian/national standards.

The uncertainties quoted are calculated in accordance with the methods of the ISO Guide to the Uncertainty of Measurement and quoted at a coverage factor of 2 with a confidence interval of approximately 95%.



Accredited Lab. 9262
Acoustic and Vibration
Measurements



HEAD OFFICE
Unit 14, 22 Hudson Ave. Castle Hill NSW 2154
Tel: (02) 96808133 Fax: (02) 96808233
Mobile: 0413 809806
Web site: www.acu-vib.com.au

